

**Sooke Fall Fair 2023**

**Presents**

# **Wild West Coast**



**Saturday Sept 9th 11 am - 6 pm**

**Sunday Sept 10th 9 am - 5 pm**

**Sooke Community Hall**

**[www.SookeFallFair.ca](http://www.SookeFallFair.ca)**

## **President's Message**

"Foggy mornings, winter storms, crashing waves on Whiffin Spit, resident bears visiting Sooke Museum, mama cougar, and her kits crossing the street in Otter Point. Hiking the Sooke Hills, paddle boarding in Cooper's Cove, orcas swimming in Sooke Harbour. Ancient forests blanketed in salal and ferns. Tidal pools flourishing with anemones and chitons. Rivers full with spawning salmon.

We live in a wild wonderland that never ceases to remind us of how lucky we are to share this land with the flora and fauna of Canada's West Coast.

This year's theme "Wild West Coast" was chosen to showcase what this region means to you. With the biodiversity surrounding us, there is something for everyone to enjoy. We can't wait to see how this year's theme brings out your creativity."

## **What's New for 2023**

This year's theme is *The Wild West Coast*. So, for entries in the catalogue that say "Theme entry" they should relate to the Wild West Coast.

## **Catalogue Changes for 2023**

Teen Youth, previously section 15, is now section 35.

Wine and Beer has been moved from Kitchencraft to section 9.

### **Important Notice Regarding Prizes**

Due to delays in confirming the prize sponsorships by publishing time, the awards will not appear in this catalogue but will be posted on our website [SookeFallFair.ca](http://SookeFallFair.ca) in the near future.

There will also be a colouring contest announced on the website.

For anyone without internet access, please phone Ida at 250-642-4110 or Richard at 250-884-8382 and arrangements will be made to provide a paper copy.

### **A Brief Description of our Prizes**

All winning entries automatically win \$3 for First, \$2 for Second and \$1 for Third place. In addition to these prizes, each section will have a "most points" prize and a "most outstanding entry" prize, plus there are all kinds of additional prizes.

There are over 300 additional prizes to be won!

### **Prizes include:**

Rosettes, gift certificates, cash awards ranging from \$5 to \$25. There are over 60 trophies to be won. The winner has their name engraved on the trophy and a photograph taken with their trophy.

## **Cover Art**

The cover picture is "Salmon Under The Waves", by local artist Greg Innes.  
Thanks Greg!



## Contact Information

Website - [SookeFallFair.ca](http://SookeFallFair.ca)  
Email - [SookeFallFairEmail@gmail.com](mailto:SookeFallFairEmail@gmail.com)  
Facebook - <https://www.facebook.com/Sooke-Fall-Fair-450870728320556/>  
Instagram - Sooke Fall Fair



## Table of Contents

President's Message	2	
Notices regarding prizes	2	
2023 Program	5	
Apple Identification	5	
Scarecrow Contest	6	
Chicken Bingo	6	
Sooke Fall Fair Philosophy	6	
Section 01 – Produce	7	
Section 02 – Flowers	10	
Section 03 - Kitchencraft	13	
Section 04 – Needlecraft	15	
Section 05 – Arts & Crafts	17	
Section 06 – Photography	18	
Section 08 – Literary Art	20	
Section 09 t Wine & Beer	22	
Notice to Exhibitors - Regulations	23	
Entry Form	25	
Section 10 – Honey	27	
Section 11 – Animals (Adult)	28	
Section 16 – LEGO	31	
Section 20 – Preschool – Ages 2 to 5	32	
Junior Sections - Overview	33	
Section 21 – Junior Kitchencraft	34	
Section 22 – Junior Growing Things	35	
Section 23 – Junior Canning	36	
Section 24 - Junior Flower Arranging	37	
Section 25 – Junior Art	38	
Section 26 – Junior Writing	39	
Section 27 – Junior Photography	40	
Section 28 – Junior Fibre Arts	41	
Section 29 – Junior Hobbies	42	
Section 35 – Teen Youth: Ages 15 to 18	44	
Pet Parade	46	
Sookeini Race	47	
Pictures of some of the 2022 winners	48	(back cover)



# 2023 Sooke Fall Fair Committee



President	Abénaki Sprinkling	250-480-8618
Vice President	Ida McDonald	250-642-4110
Secretary	Richard Sharman	250-884-8382
Treasurer	Sandy Bowie	250-642-4753
Directors	Benoit Renault, Candace Linde, Brandyn Anderson, Sheila Hubbard	

## Important Times, Dates and Deadlines

- Wednesday, August 23 **Deadline** for Early Bird Entries (by 5 pm).
- Saturday, August 26 Pickup and pay for early bird entry tags at Market, Sooke Community Hall (10 am to 2 pm).
- Tuesday, September 5 **Deadline** for Advance Entries (by 5 pm).
- Thursday, September 7 Pay for and pick up advance entry tags. Late entries accepted for non-perishable items. Drop off all non-perishable entry items with entry tags at Sooke Community Hall (2 pm to 8 pm).
- Friday, September 8 Pay for and pick up advance entry tags. Late entries accepted for perishable items. Drop off all perishable entry items with entry tags at Sooke Community Hall (2 pm to 8 pm). Perishable items include all items relating to Produce, Growing Things, Flowers, Flower Arranging, Kitchencraft, Junior Kitchencraft, with the exception of Canning.  
All Exhibitors must leave Community Hall (8 pm).

### Food Concession

Saturday 11 am to 5 pm

Sunday 11 am to 3 pm

### Pancake Breakfast

Sunday 9 am to 11 am

Courtesy of

Sooke Harbourside Lions

### Children's Games

There will be ongoing games for children throughout both Fair days.

### Entertainment

See our big board at the entrance for times and info.



# 2023 Programme

## Saturday, September 9

7:30 am to 8:30 am	Adult and Junior Animal Entries Received
7:00 am to 11:00 am	Community Hall closed for Judging
10:00 am to 5:00 pm	Games and Viewing of Animals
11:00 am to 5:00 pm	Food Concession
11:00 am to 6:00 pm	Fair Open to Public
12:30 pm	Opening Ceremonies
1:30 pm to 3:30 pm	Apple Identification - BC Fruit Testers (see Section 01 for details)
2:00 pm to 3:30 pm	Great Sookeini Race
5:00 pm	Pick up Junior and Adult Animal Entries

## Sunday, September 10

8:00 am	Drop off Junior and Adult Animal Entries
9:00 am to 11:00 am	Pancake Breakfast, Community Hall Dining Room
9:00 am to 5:00	Fair Open to Public
11:00 am to 3:00 pm	Food Concession
11:30 am	Pet Parade Registration, outside on Eustace
12:00 pm	Pet Parade Judging - followed by the Parade around the Hall
3:00 pm	Junior and Adult Animal Entries may be picked up
3:30 pm	Junior and Adult Awards Ceremony
4:00 pm to 5:00 pm	Auction of selected Fall Fair entries — see note below
4:00 pm to 5:30 pm	Prize Money Pick Up - Location in Hall to be announced



Items marked with red dots are for sale.



Auction items are marked with happy faces .  
Please see Section Heads for more details.

## Scarecrow Contest

Decorate your scarecrow and bring your entry to the Sooke Community Hall between 2 pm and 8 pm on Thursday, September 7.

No entry fee is required, but an entry form is. Use code 51-C-1.

Scarecrows will be judged by Mayor Maja Tait.

Prizes sponsored by the District of Sooke

First Place \$15

Second Place \$10



## Chicken Bingo

Buy your square for 25 cents and guess where the chicken will hop and plop. If the chicken plops on your square you win 50/50



## **Sooke Fall Fair Philosophy**

The Sooke Fall Fair is a community fair that gives people an opportunity to congregate in the spirit of the “Rural Fair” philosophy, and in this traditional annual event, reflects Sooke’s strong community spirit.

The philosophy embodies:

- Pride in local natural resources
- Pride and focus on individual and family endeavours
- The integration of young and elderly, able and disabled, participator and spectator
- The spirit of volunteerism in which our community has long prided itself



## **Sooke Fall Fair Celebrates The Biggest Little Craft Fair Saturday 25th November Sooke Community Hall**

Details to be announced on our website  
[SookeFallFair.ca](http://SookeFallFair.ca)

# Section 01 – Produce

Contact Information - Lisa Nilsson navyfiremom@gmail.com 250-882-0956

## **Produce Section Rules:**

1. ONLY 1 entry per class.
2. Entries requiring more than one specimen should be as uniform as possible in colour, shape and size.
3. The number of fruits or vegetables exhibited must be the exact number listed for the class.
4. Verify the length and width of your entries to ensure that it meets the defined class requirements. Eg. Zucchini under 10” or 25cm.
5. Entries shall be DISQUALIFIED if they fail to meet the requirements for that class.
6. Entries shall be named as to variety, for example: Beans – Scarlet Runner, Cucumber Marketmore, and written on the tag for the benefit of the Judges and the viewing public.
7. Entries displayed on plates provided by Sooke Fall Fair. Sooke Fall Fair will have the plates the day the entries are submitted.
8. Number of specimens will be listed beside the entry. E.g.. Apples (5), Strawberries (12)
9. Green Nuts not allowed, can use last years yield.
10. Onions and garlic should be trimmed. For onions, leave 2” of the stalk and fold over and banded with an elastic. For Garlic, trim stalk to ¾”.
11. All entries should be edible and non-psychoactive.
12. AOV means Any Other Variety; (that variety is not listed in any class). They SHALL be named. Eg. Strawberries, everbearing, Kent.

## **Section 01 - Division A - Fruit**

### **Classes**

- 1 Apples, Gravenstein, Red or Yellow, 5
- 2 Apples, Spartan, 5
- 3 Apples, King, 5
- 4 Apples, Wealthy, 5
- 5 Apples, Delicious, Red or Yellow, 5
- 6 Apples, Cox’s Orange, 5
- 7 Apples, Crab, 8
- 8 Apples, AOV, 5
- 9 Pears, Bartlett, 5
- 10 Pears, Anjou, 5
- 11 Pears, AOV, 5
- 12 Kiwi, 5
- 13 Kimi, Berry or Hardy, 8
- 14 Kiwi, AOV, 5
- 15 Plums, Yellow Egg, 6
- 16 Plums, Italian prune or French, 6
- 17 Plums, AOV, 6
- 18 Peaches, any Variety, 3
- 19 Strawberries, any Variety, 12
- 20 Blackberries, any Variety, 12
- 21 Blueberries, any Variety, 12
- 22 Nuts, any Variety (green not allowed), Named, 12
- 23 Grapes, any Variety, 2 Bunches

### **FRUIT PRESENTATION NOTES:**

All fruits in a class should be approximately the same size and colour, and be free from blemishes such as insect damage, fungus or disease.

Berries are shown with stems attached (blackberries and blueberries will be judged with or without stems).

Apples and pears should have stems attached and be wiped. Peach stems must not be removed. Plums, grapes and kiwi should have stems attached and bloom left on. Nuts must be edible, so no green nuts are allowed. For AV and AOV classes, please include the variety on your entry tag.

**All displays should be free from insect damage or disease.**

- 24 Melon, any Variety 2 (this can include melons, cantaloupes, watermelons, muskmelons)
- 25 Fig, any Variety, Named if possible, 3
- 26 AOV of fruit, Named
- 27 AOV of berry, named, 8

## Section 01 – Produce continued

### VEGETABLE PRESENTATION NOTES:

Vegetables should be displayed in the following manner:

Tomatoes – stems attached.

Carrots – tops removed to 1” from crown.

Beets – roots intact, 1” stem.

Onions – roots removed and 2” stem folded over with an elastic band.

Garlic - stalk trimmed to ¾”.

Peas and bean pods – uniform in size and length, stems attached.

Cabbage – outer leaves intact.

Cauliflower – leaves trimmed just below the curd.

Collection of herbs – please clearly label your varieties

Vegetables

### Section 01 - Division B - Root Vegetables

#### Classes-

- 1 Beets, long, 3 roots
- 2 Beets, globe, 3
- 3 Carrots, long (over 5”), 5
- 4 Carrots, intermediate, (up to 5”), 5
- 5 Longest carrot
- 6 Parsnips, 3
- 7 Potatoes, red, 5
- 8 Potatoes, white, 5
- 9 Potatoes, yellow, 5
- 10 Potatoes, russet, 5
- 11 Potatoes, AOV, 5 (e.g., fingerlings)

### Section 01 – Division C - Legumes

#### Classes

- 1 Beans, bush, 6
- 2 Beans, Scarlett runner, 6
- 3 Beans, pole, 6
- 4 Beans, yellow wax, 6
- 5 Beans, AOV, 6
- 6 Peas, Snow, 6 (edible pod type)
- 7 Peas, shelling, 6
- 8 Peas, AOV, 6
- 9 Chickpeas, 6

### Section 01 – Division D - Brassicas

#### Classes

- 1 Cabbage, red, 2 heads
- 2 Cabbage, Savoy, 2 heads
- 3 Cabbage, AOV, named, 2 heads
- 4 Cauliflower, any Variety, 2 heads
- 5 Broccoli, 2 crowns
- 6 Kohlrabi, any Variety, 2
- 7 Radish, any Variety, 5
- 8 Horseradish, 3” root
- 9 Kale, any Variety, 2 heads
- 10 AOV brassica, named

8

### Section 01 – Division E - Squash

#### Classes

- 1 Heaviest pumpkin or Squash
- 2 Squash, Acorn, 2
- 3 Squash, spaghetti, 2
- 4 Squash, zucchini, any Variety, under 10”,
- 5 Squash, AOV, 1
- 6 Cucumber, pickling, 6
- 7 Cucumber, slicing, 2
- 8 Cucumber, Long English, 2
- 9 Cucumber, AOV
- 10 Cucamelon or mouse melon, 6

### Section 01 – Division F - Alliums

#### Classes

- 1 Onions, red, 3
- 2 Onions, White (under 4”, not pearl), 3
- 3 Onions. Yellow or brown, 3
- 4 Onions, White, (4” or larger), 3
- 5 Onions, pearl, 6
- 6 Onions, AOV
- 7 Leeks, any Variety, trimmed, 3 stalks
- 8 Shallots, any Variety, trimmed, 3
- 9 Garlic, any Variety, named, trimmed and cleaned, 3

### Section 01 – Division G - Peppers and Tomatoes

#### Classes

- 1 Pepper, green, 2
- 2 Pepper, hot, with stems on, 2
- 3 Pepper, red, 2
- 4 Pepper, yellow, 2
- 5 Pepper, AOV, 2
- 6 Tomatoes, ripe, stem on, 3
- 7 Tomatoes, green, stem on, 3
- 8 Tomatoes, cherry, stem-on, 12
- 9 Tomatoes, Heirloom, stem-on, named, 3
- 10 Tomatoes, Roma, 3
- 11 Tomatoes AOV, named, 3



## ***Section 01 – Produce continued***

### **Section 01 – Division H - Greens**

#### **Classes**

- 1 Lettuce, head, any Variety 2 heads
- 2 Lettuce, leaf, any Variety, 2 heads
- 3 Lettuce, Romaine, any Variety, 2 heads
- 4 Lettuce, AOV, 1
- 5 Swiss Chard, any Variety, 2 plants
- 6 Celery, any Variety, 2 stalks
- 7 Garden Herbs, fresh, 5 or more in Water, containers, named with usage

### **Section 01 – Division I - Miscellaneous**

#### **Classes**

- 1 Rhubarb, 5 stalks
- 2 Corn, 3 ears, without husks
- 3 Edible Mushrooms, any Variety, Named, 3
- 4 AOV of vegetable, named
- 5 Most weird, unique, or ugly vegetable (1 specimen)
- 6 Most Pathetic produce entry (1 specimen)
- 7 The Spirit of the Wild West Coast. Foraged display of local or native fruits, berries, vegetables, plants, edible mushrooms. MUST Be Native to Southern Vancouver Island or the Pacific Northwest.

### **Section 01 – Division J – Field Crops**

#### **Classes**

- 1 Corn, 5 stalks, complete
- 2 Turnips, Swede, 5
- 3 Sunflowers, 2 complete stalks, (Supports supplied by Sooke Fall Fair)
- 4 Wheat, 1 sheaf, heritage, named
- 5 Oats, 1 sheaf, Heritage, named
- 6 Legumes (still green), grown for pulse, including soybeans, 6 pods

## **Apple Identifying with the B.C. Fruit Testers Association Saturday, September 9th from 1:30 to 3:30**

Not sure what kind of apple you have growing in your yard?

The BCFTA will be identifying apples and answering any questions you may have about caring for your trees. When bringing in apples for I.D. please remember:

- There's lots of variation within each cultivar, so bring in 4-6 apples from each tree. Only 3 varieties please.
- Some cultivars have a natural bloom, so don't wipe them or shine them up.
- Stems are important in identification, so leave the stems on.
- Apples "sweat" in plastic bags, changing their natural flavours. Bring them in paper bags, not plastic.

# Section 02 – Flowers

Contact Information: Section Head - Kelly Keys - 250-642-2079

## Flower Section Rules:

1. All entries to be staged in containers provided by Sooke Fall Fair; exceptions are classes requiring pots, bowls, sniffers, baskets or vases. For these classes, entrants must supply their own.
2. Worktable, containers and pots of water will be available to stage entries.
3. JUDGING STANDARDS: Flowers are judged against perfection and not against other entries. If an entry requires more than one item, look for uniformity of size, colour and shape.
4. Dahlias and Chrysanthemums should have two leaves attached to stem and showing above the top of the container, except in arrangements.
5. When possible, please name the variety of the plant/flower exhibited and write variety on entry tag.
6. Judges may withhold any or all prizes where the exhibits are not considered worthy of the award, and the judge's decision on the relative merits of the exhibits shall be final.

## DEFINITIONS:

BLOOM:	Means NO buds allowed.
BASKET:	A decorative, usually flared container with a fixed handle (except hanging basket). It may be made of woven wicker, metal, paper, papier-mâché, china or lace, with a waterproof lining.
BOWL:	A container with the inside mouth dimension LARGER than the HEIGHT of the container, measured from the surface of the table to the highest point.
VASE:	A container with the inside mouth dimension SMALLER than the HEIGHT of the container, measured from the surface of the table to the highest point.
SNIFFER:	A large, short stemmed glass goblet with the bowl narrowing toward the top.
SPIKE:	A thick, upright stem carrying several flowers (e.g. gladiolus).
SPRAY:	A portion of a plant, laterals or side shoots with a number of flowers on the stem, buds may be present.
STEM OR STOCK:	A plant structure, carrying one or more flowers. Buds may be present, and it may be branched like a bearded iris.
SPECIMEN:	Any stem, terminating in a bloom. NO side buds permitted.
FOLIAGE:	Where used in bowls, vases or baskets, any foliage or baby's breath may be included.
NAS:	Notation on exhibit card means – Not According to Schedule.
NOVICE	An exhibitor who has not entered that class previously.

## Section 02 - Division A - Chrysanthemums

### Classes:

- 1 Minimum 6-12, any type or types with own foliage arranged in bowl
- 2 1 Bloom, Disbudded, Large Variety
- 3 3 Blooms, Disbudded, any Variety
- 4 3 Blooms, Disbudded, 1 Each of 3 Varieties
- 5 1 Spray, any Variety



## Section 02 - Division B – Dahlias

### Classes:

- 1 Pompom, Under 2", 3 Blooms
- 2 Ball, 1 Bloom
- 3 Cactus or Semi-Cactus, 3 Blooms
- 4 Anemone, 3 Blooms
- 5 Water Lily, 1 Bloom
- 6 Decorative, Over 6", 3 Blooms
- 7 Collection, Mixed Varieties, 6 Blooms using 3 Containers with 2 blooms in each container
- 8 AOV, 3 Blooms
- 9 Fun Category, Biggest Dahlia Bloom (measured across diameter and depth)
- 10 Decorative, Under 6", 3 Blooms

## **Section 02 – Flowers continued**

### **Section 02 - Division C - Novice Dahlias**

#### **Classes:**

- 1 Pompom, Under 2", 3 Blooms
- 2 Ball, 1 Bloom
- 3 Cactus or Semi-Cactus, 3 Blooms
- 4 Decorative, Over 6", 3 Blooms
- 5 Collection, Mixed Varieties, 6 Blooms using 3 containers with 2 blooms in each container
- 6 Decorative, Under 6", 3 Blooms

### **Section 02 - Division D – Roses**

#### **Classes:**

- 1 Hybrid Tea, Disbudded, 1 Bloom
- 2 Hybrid Tea, Disbudded, 3 Blooms
- 3 Grandiflora or Floribunda, 1 Stem
- 4 Modern Shrub or Austin English Rose, 1 Stem
- 5 Climber, Floribunda Roses in Snifter, 1 Stem
- 6 Miniature, in Bowl (container), 6 Blooms
- 7 Most Fragrant, Floating in Snifter, 1 Bloom
- 8 Rose Collection, any Variety or Varieties Arranged in Bowl, 6 or More
- 9 Novice Rose, Hybrid Tea, Disbudded, 1 Bloom
- 10 Novice Rose, Hybrid Tea, Disbudded, 3 Blooms
- 11 Novice Rose, Grandiflora, Floribunda or Shrub Rose, 1 Stem
- 12 Novice Rose Collection, Arranged in Bowl, 6 or More

### **Section 02 - Division E – Miscellaneous**

#### **Classes:**

- 1 Asters, 3 Blooms
- 2 Antirrhinums (Snap Dragons), 3 Stems, 1 or More Varieties, 1 container
- 3 Carnations, 3 Blooms
- 4 Cosmos, 3 Sprays
- 5 Crocosmia (Montbretia), 3 Sprays
- 6 Delphinium, Pacific Giant Type, 1 Spike
- 7 Delphinium, Dwarf, 1 Spike
- 8 Gladiolus, Large (bottom floret 4" or more wide), 1 Spike
- 9 Gladiolus, Small (bottom floret under 4" wide), 1 Spike
- 10 Gladiolus, 1 or More Varieties in 3 Containers, 3 Spikes
- 11 Novice Gladiolus, any Variety, 1 Spike
- 12 Novice Gladiolus, 1 or More Varieties in 3 Containers, 3 Spikes
- 13 Gloriosa Daisies, 6 Blooms
- 14 Hydrangea, Blue, 2 Blooms
- 15 Hydrangea, Pink, 2 Blooms
- 16 Lilies, any Variety, 1 Spike

- 17 Marigolds, French, any Variety, 3 Stems
- 18 Marigolds, African, any Variety, 3 Stems
- 19 Michaelmas Daisies, 3 Stems, 1 or more varieties
- 20 Pansies, Arranged in Bowl, 5 Blooms
- 21 Sweet Peas, 1 Variety, 12 Stems
- 22 Sweet Peas, Mixed Varieties, 12 Stems
- 23 Zinnias, 1 or More Varieties, 3 Blooms
- 24 AOV Annual Flower not Listed, 1 Stem, Bloom or Spike
- 25 AOV Perennial Flower not Listed, 1 Stem, Bloom or Spike
- 26 Flowering or Berried Shrub (not hydrangea), 1 Stem
- 27 Everlasting Flowers, 1 or More Varieties, 3 Stems
- 28 Begonias, Displayed in Moss, 3 Blooms
- 29 Begonias, Displayed in Moss, 1 Bloom
- 30 Marigolds, Under 2" (no buds), Arranged in Bowl
- 31 Nasturtiums, with Own Foliage, Arranged in Bowl
- 32 Petunias, with Foliage, Arranged in Bowl, 6 Single
- 33 Petunias, with Foliage, Arranged in Bowl, 6 Double
- 34 Heather, Displayed in Bowl or Basket, Max Height 12"
- 35 Dahlias, Basket of 9 to 15, Arranged in Basket, Max Height 22"
- 36 Collection of Annuals, 8 to 12 Species, in Vase
- 37 Collection of Herbaceous Perennials, 6 to 12 Species, in Vase
- 38 Collection of Cut Flowers, 10 to 20, Annual and/or Perennial, in Vase
- 39 Sweet Peas, 12 to 18 Stems, Arranged in Bowl
- 40 Display of Lupins, native or cultured, in Vase

### **Section 02 - Division F - Potted Plants**

#### **Classes:**

- 1 Begonia, Tuberous Upright (not hanging), 1 Plant
- 2 Begonia, Fibrous, 1 Plant
- 3 Cactus or Succulent, 1 Plant
- 4 Foliage Plant, (fern not permitted), 1 Pot
- 5 Fern, (not asparagus fern), 1 Pot
- 6 Geranium, 1 Pot
- 7 Geranium, Martha Washington, 1 Pot
- 8 Pan of Rock Garden Plants
- 9 Bonsai, 1 Container
- 10 Miniature Garden, Max Size 12" x 18"
- 11 African Violet, Single Crown, Must be in flower, 1 Pot
- 12 Fuchsia, Upright, 1 Plant, 1 Pot
- 13 Any Other Potted Plant

## Section 02 – Flowers continued

### Section 02 - Division G - Hanging Baskets

#### Classes:

- 1 Fuchsia, Hanging, 1 Plant
- 2 Fuchsia, Hanging (not in wire basket), 2 or More Plants
- 3 Begonia, Hanging (not in wire basket), 1 or More Plants
- 4 Geranium, Hanging (not in wire basket), 1 or More Plants
- 5 Mixed, Hanging, Wire Type, with Moss or Other Base



## Decorative Flowers

### Divisions 02-H and 02-I ADVANCE ENTRY ONLY

The exhibitor ONLY need not necessarily grow flowers used in this section. Some fresh plant material must be used in all entries except where specifically stated. NO SILK or ARTIFICIAL flowers allowed. Divisions 02-H and 02-I are displayed in niches, size 28" wide x 38" high x 12" deep.

NOVICE is an exhibitor who has not won more than 3 firsts in a decorative show

TITLES ARE MEANT TO BE INSPIRATIONAL & NEED NOT BE TAKEN LITERALLY.

### INTERNATIONAL RULES:

1. An exhibit is plant material, with or without accessories, contained within a space as specified by the schedule.
2. Plant material should predominate over all other components used in an exhibit.
3. No artificial plant material may be used unless stated.
4. Living plant material, when cut, must be in water or water retaining material, with the exception of succulents or other water-retaining plants, fruits, and vegetables.
5. Painted and/or surface material may be used unless stated otherwise

### Section 02 - Division I – OPEN

#### Classes:

- 1 This year's theme
- 2 "BEE Amazing" a design using bee friendly material
- 3 "Bicycle Built for Two" a design using two containers

### Section 02 - Division J - Home Decoration

#### Classes:

- 1 "Minnie", a miniature design under 6" overall, including the base
- 2 Arrangement suitable for Coffee Table (all fresh plant material)
- 3 Arrangement suitable for Side Table (dried and/or treated plant material)
- 4 Arrangement suitable for Side Table (all fresh plant material)
- 5 Arrangement, Name the Occasion (e.g. Birthday, New Baby, Wedding, etc.)
- 7 Arrangement in a teacup

### Section 02 - Division H - NOVICE

#### Classes:

- 1 This year's Theme
- 2 "BEE Amazing" a design using bee friendly material
- 3 "Bicycle Built for Two" a design using two containers

# Section 03 - Kitchencraft

Contact Information: Section Head - Candace Linde - 778-977-5771

## Kitchencraft Section Rules:

1. All entries are to be placed on a new tray and in plastic bags provided by the Kitchencraft Section.
2. Do not decorate any entry with ribbons, flowers, fancy lids, labels, or dishes.
3. All entries must be made from scratch (no mixes).
4. No cream or meat fillings due to easy spoilage.
5. Do not cut entries.
6. PRESERVES: Jam, jelly, chutney and relish in 250 ml (8 oz) capacity jars. Canned fruit, pickles in pint or quart jars. Collections in matching jars. All jars to have seals and lids.
7. Labels and jars must be clean, and not identified with the entrant's name.

## Section 03 - Division A - Yeast Breads

### Classes:

- 1 Bread, White, 1 Loaf
- 2 Bread, Brown, 1 Loaf
- 3 Bread, Multigrain, 1 Loaf
- 4 Bread, Raisin, 1 Loaf
- 5 Bread, AOV, 1 Loaf
- 6 Bread, Free Standing, 1 Loaf
- 7 Dinner Rolls, White, 6 Individual (no muffin tins)
- 8 Dinner Rolls, Pull Aparts, White, 1 Pan
- 9 Cinnamon Buns, 6
- 10 Fleischmann's AOV Yeast Bread, 1 Loaf
- 11 Sourdough Bread, 1 Loaf

## Section 03 - Division B - Quick Breads

### Classes:

- 1 Baking Powder Biscuits, Plain, 3
- 2 Baking Powder Biscuits, Sweet (may have fruit), 3
- 3 Scones, Cheese, 3
- 4 Scones, AOV, 3

## Section 03 - Division C - Muffins & Sweet

### Loaves

### Classes:

- 1 Loaf, Lemon, 1
- 2 Loaf, Zucchini, 1
- 3 Loaf, Banana, 1
- 4 Loaf, AOV, 1
- 5 Muffins, Carrot, 3
- 6 Muffins, Bran, 3
- 7 Muffins, Blueberry, 3
- 8 Muffins, AOV, 3



## Section 03 - Division D - Cakes, Squares & Cookies

### Classes:

- 1 Decorated Cake, theme entry
- 2 Chocolate Cake, 2 Layer, Iced or Frosted
- 3 Cake, Carrot, 1
- 4 Cake, AOV, 1
- 5 Brownies, Iced, 3
- 6 Nanaimo Bars, 3
- 7 Squares, AOV, 3
- 8 Cookies, Drop, 3
- 9 Cookies, Rolled, 3
- 10 Cookies, Shortbread, 3
- 11 Cookies, AOV, 3
- 12 Favourite Family Recipe based on this year's theme

## Section 03 - Division E - Pies & Tarts

### Classes:

- 1 Pie, Apple, 1
- 2 Pie, Pumpkin, Pumpkin filling from scratch, 1
- 3 Pie, Blackberry, 1
- 4 Pie, Blueberry, 1
- 5 Pie, AOV, 1
- 6 Butter Tarts, 3
- 7 Tarts, AOV, 3

## Section 03 - Division F - Candy

### Classes:

- 1 Fudge, Chocolate, 6 Pieces
- 2 Fudge, AOV, 6 Pieces
- 3 Candy, AOV

## Section 03 - Kitchencraft continued

### Section 03 - Division G – Eggs

#### Classes:

- 1 Eggs, Chicken, Brown (basket provided), 6
- 2 Eggs, Chicken, White (basket provided), 6
- 3 Eggs, AOV Named (e.g. goose, duck) (basket provided), 6

### Section 03 - Division H – Preserves

#### Classes:

- 1 Salmon, Plain, 1 Jar
- 2 Salmon, Smoked, 1 Jar
- 3 Salmon, Pickled, 1 Jar
- 4 Seafood, AOV, 1 Jar
- 5 Jam, Peach, 1 Jar
- 6 Jam, Blackberry, 1 Jar
- 7 Jam, 3 Kinds, 1 Jar of Each
- 8 Jam, AOV, 1 Jar
- 9 Jelly, Blackberry, 1 Jar
- 10 Jelly, 3 Kinds, 1 Jar of Each
- 11 Jelly, AOV, 1 Jar
- 12 Marmalade, Orange, 1 Jar
- 13 Marmalade, AOV, 1 Jar
- 14 Canned Peaches, 1 Jar
- 15 Canned Fruit, AOV, 1 Jar
- 16 Canned Gift Wrapped combination, Different Kinds, 6 Jars
- 17 Canned Fruit Juice, Home Pressed, 1 Jar
- 18 Canned Vegetables, 1 Jar
- 19 Canned Vegetable Collection, Different Kinds, 6 Jars
- 21 Salsa, 1 Jar
- 22 Chutney, 1 Jar
- 23 Relish, 1 Jar
- 24 Pickles, Dill, Sliced, 1 Jar
- 25 Pickles, Beets, Whole, 1 Jar
- 26 Collection of Pickles, Different Kinds, 6 Jars
- 27 Pickles, AOV, 1 Jar
- 28 Sauce, any Variety, 1 Jar
- 29 Vinegar, Herbal, 1 Jar
- 30 Vinegar, AOV, 1 Jar
- 31 Fruit Leather, 6 Pieces
- 32 Dried Fruit, Apple, 6 Pieces
- 33 Dried Fruit, Plum, 6 Pieces
- 34 Dried Fruit, AOV, 6 Pieces

### Section 03 - Division I - Diabetic Cooking (Low Glycemic) *(Include Recipe with Entry)*

#### Classes:

- 1 Cake, any Kind, 1
- 2 Cookies, any Kind, 3
- 3 Muffins, any Kind, 3
- 4 Loaf, any Kind, 1
- 5 Applesauce, 1 Jar
- 6 Fruit, Canned, 1 Jar
- 7 Jam, any Kind, 1 Jar
- 8 Jelly, any Kind, 1 Jar
- 9 Candy, any Variety, 6 Pieces

### Section 03 - Division J - Teen Youth Baking *(Ages 15-18, Adult Rules)*

#### Classes:

- 1 Bread, White, 1 Loaf
- 2 Cinnamon Buns, 5
- 3 Loaf, any Variety, 1
- 4 Muffins, any Variety, 3
- 5 Cookies, any Variety, 3
- 6 Pie, any Variety, 1
- 7 Tarts, any Variety, 3
- 8 Squares, Rice Krispies, 3
- 9 Fudge, 3 Pieces
- 10 Jam or Jelly, 1 Jar
- 11 Canned Fruit or Vegetable, 1 Jar
- 12 Any Other Canning, 1 Jar
- 13 Pickles, any variety, 1 jar
- 14 "Best Lunchbox Snack" Best family home made cookies, squares or bars.
- 15 Decorated Cake, theme entry
- 16 Dinner Rolls, White, 6 individual (no muffin tins)



### Section 03 - Division K - Smoked Fish

*(Entries judged on flavour, texture and quality of appearance)*

#### Classes:

- 1 Cold Smoked Fish
- 2 Hot Smoked Fish
- 3 Traditional Native Smoked Fish
- 4 Candied Salmon

### Section 03 - Division L - Gluten Free

*(include recipe with entry)*

#### Classes:

- 1 Muffins, any Variety, 3
- 2 Cake, any Variety, 1
- 3 Cookies, any Variety, 3
- 4 Any Other Variety of Baking not listed

# Section 04 – Needlecraft

Contact Information: Section Head - Abénaki Sprinkling - abenakihs@gmail.com

## **Attention All Quilters:**

“Quilts will be hung and MUST INCLUDE A SLEEVE ON THE BACK so a dowel can be inserted; and include an opening halfway of total length of sleeve”.

Most quilted creations have a story; for whom it was made, depicting some part of one’s lifestyle or interests, etc. If you would like to share this with us, please feel free to write a small story and attach it to your work of art.

**QUILT SIZES: CRIB - 45" x 60"      SINGLE - 72" x 90"      FULL - 81" x 96" and up**

## **Section 04 - Division A – Quilting**

### **Classes:**

- 1 Quilt, Worked by a Group, (3 or more persons), any Size
- 2 Quilt, Hand Quilted, Full Size
- 3 Quilt, Hand Quilted, any Other Size
- 4 Quilt, Machine Quilted, Full Size
- 5 Quilt, Machine Quilted, any Other Size
- 6 Quilt, Pre-printed Fabric, Machine or Hand Quilted, any Size
- 7 Quilt, Top Only, Hand Pieced, any Size
- 8 Quilt, Top Only, Machine Pieced, any Size
- 9 Quilted Wall Hanging, under 60"
- 10 Quilted Wall Hanging, Christmas Theme, under 60"
- 11 Quilted Placemats, Hand or Machine, Set of 2
- 12 Quilted Pot Holder, 2
- 13 Quilted Cushion, Made Up
- 14 Quilted Vest, any Size
- 15 Quilted Bed Set, including Shams, any size
- 16 Quilted Tea Cozy
- 17 Quilted Table Runner
- 18 Quilted Bag
- 19 Wall Hanging of Original Design
- 20 Any Quilted Creation, not Listed
- 22 Machine Embroidery on any Quilted Item
- 23 “Quilt of Valour” any Size
- 24 Theme Entry, Quilt-Single size 72" x 90"

## **Section 04 - Division B – Embroidery**

### **Classes:**

- 1 Embroidered Pillow Cases
- 2 Embroidered Table Cloth, any Size
- 3 Embroidered Article, AOV
- 4 Crewel Work, any Article
- 5 Hardanger Embroidery, any Article

- 6 Cross Stitch, Counted, Picture Mounted
- 7 Cross Stitch, Counted, Picture Unmounted
- 8 Cross Stitch, Stamped, Picture Mounted
- 9 Cross Stitch, Stamped, Picture Unmounted
- 10 Cross Stitch, Picture Christmas Theme
- 11 Needle Point, any Variety
- 12 Needle Punch, mounted
- 13 Mixed Method, Any combination of needlecraft art, minimum 2 methods (e.g. cross stitch and embroidery), any Article

## **Section 04 - Division C – Rugs**

### **Classes:**

- 1 Handmade Hooked Rug, any Size
- 2 Handmade Braided Rug, any Size
- 3 Handmade Rug, AOV
- 4 Recycled Clothing Rag Rug, any Size
- 5 Mug Rug, 9" x 6", any Method

## **Section 04 - Division D – Weaving & Wool Arts**

**Note: Include fiber content for Hand-woven articles**

### **Classes:**

- 1 Hand Spun, (app. 20M) Llama or Alpaca, 1 Skein
- 2 Hand Spun, (app. 20M) any Fibre (including Sheep & Plant) 1 Skein
- 3 Hand Spun Skeins, Dyed for Specific Project (name the project)
- 4 Hand-spinning, any Article of Clothing Solely Handspun (can be dyed)
- 5 Hand-weaving; Table Linens, Runner, Napkin
- 6 Hand-weaving, Scarf, min. 5 feet, with or without Fringe
- 7 Hand-weaving, Shawl, min. 6 feet finished plus, with or without Fringe
- 8 Hand-woven Article, not Already Listed
- 9 Wet Felting, any Article, Flat
- 10 Wet Felting, any Article, 3 Dimensional
- 11 Needle Felting, any Article, Flat
- 12 Needle Felting, any Article, 3 Dimensional
- 13 Recycled Felted Article, Made from a Felted Sweater

## Section 04 - Needlecraft, continued

### Section 04 - Division E – Sewing

Note: Sewn articles must be like new with no stains or obvious signs of wear, except costumes which, if worn, must be clean and include a short description of where/when/what the item was worn for.

#### Classes:

- 1 Sewn, Clothing, Women's or Men's, Tailored, any Article
- 2 Sewn, Clothing, Women's or Men's, Casual, any Article
- 3 Sewn, Clothing, Child's, any Article
- 4 Sewn, Costume, Adult
- 5 Sewn, Costume, Child
- 6 Sewn, AOV
- 7 Sewn, Household Item, any Type
- 8 Sewn, Christmas Decoration, any Creation
- 9 Sewn, Apron
- 10 Sewn, from Recycled Fabric, any Item
- 11 Sewn Toy
- 12 Sewn, Article using Non-Fabric Items
- 13 Sewn, Clothing/Costume, Upcycled, major style change, must include 'before' photo, any Article
- 14 Sewn, AOV Bag



### Section 04 - Division F – Crochet, Tatting & Lace

#### Classes:

- 1 Crochet, Garment, Adult
- 2 "Bee Friendly" Crochet, Quilt
- 3 Crochet, Garment, Child or Baby
- 4 Crochet, Cushion
- 5 Crochet, Doily
- 6 Crochet, Baby Crib Cover
- 7 Crochet, Afghan, any Size
- 8 Crochet, Baby Outfit, minimum 2 items, must include a sweater
- 9 Crochet, Slippers, Adult
- 10 Crochet, Slippers or Booties, Baby or Child
- 11 Crochet, Toy
- 12 Tatting, any Article
- 13 Crochet, Scarf
- 14 Crochet, AOV
- 15 Crochet, any Item Using T-shirt Thread
- 16 Crochet, Granny "Square" Sampler blanket, max 3' x 4', can be any geometric shape block
- 17 Crochet, Hat or Headband
- 18 Crochet, Shawl or Poncho, with or without Fringe
- 19 Crochet, Mug Cozy, must include mug
- 20 Mixed Method, any combination of needlecraft art, minimum 2 methods, any Article
- 21 Crocheted Item using this year's theme (e.g. hat, toy, blanket)
- 22 Crochet, Amigurumi

### Section 04 - Division G – Knitting

#### Classes:

- 1 Hand Knit, Sweater, Fingerling Yarn, any size
- 2 Hand Knit, Sweater, Fingerling Yarn, Baby
- 3 Hand Knit, Sweater, Worsted Yarn, any Size
- 4 Hand Knit, Sweater, Worsted Yarn, Baby
- 5 Hand Knit, Sweater, Chunky Yarn, any Size
- 6 Hand Knit, Sweater, Aran, any Size
- 7 Hand Knit, Baby Outfit, minimum 2 items, must include a sweater
- 8 Hand Knit, AOV
- 9 Hand Knit, Gloves, Adult
- 10 Hand Knit, Mitts, any Size
- 11 Hand Knit, Socks, any Size
- 12 Hand Knit, Slippers, any Size
- 13 Hand Knit, Afghan, any Size
- 14 Hand Knit, Cushion
- 15 Coast Salish Knitting Technique, AOV
- 16 Hand Knit, Shawl or Poncho, with or without Fringe, any Size
- 17 Hand Knit, Scarf
- 18 Hand Knit, Toy
- 19 Hand Knit Hat or Headband
- 20 Hand Knit Cowl
- 21 Hand Knit Fingerless Gloves
- 22 Hand Knit, Mug Cozy, must include mug
- 23 Hand Knit, Crib Blanket
- 24 Hand Knit, Teddy Bear

### Section 04 - Division H – Pincushions Minimum size 4" x 6"

#### Classes:

- 1 Quilted
- 2 Sewn
- 3 Crochet
- 4 Hand Knit
- 5 Theme Entry

### Section 04 - Division I – Golden Age – Entrants 70+ Years

#### Classes:

- 1 Crochet, any Article
- 2 Hand Knit, any Article
- 3 Hand Embroidered, any Article
- 4 Needlepoint, Petit Point, or Cross Stitch
- 5 Hand-Weaving, any Article
- 6 Sewn, any Article
- 7 Quilted, any Article
- 8 Toy, any Method or Style
- 9 Any other needle art not listed



# Section 05 – Arts & Crafts

Contact Information: Section Head - Sheila Hubbard - 250-642-5502

## Arts & Crafts Section Rules:

1. Entries must be completed within the last two years.
2. Entries must not have been entered in the Fair in previous years.
3. Entries must, where possible or applicable, be signed by the crafter.
4. Refurbished items must be easily carried in and follow general admittance.
5. Sizes must be stated on entry form.
6. Maximum desirable size of entries is 24" x 24" – Contact Section Head to see if space is available
7. All entries requiring hanging must be properly framed and equipped to hang safely. (Entries without proper hanging equipment may risk not being displayed).
8. Oversized or heavy art judged unsafe to hang will be displayed only if space allows.



## Section 05 - Division A - Adult Classes:

- |  |  |
|--|--|
| 1 Handmade card  | 26 Decoupage, any item                                   |
| 2 Origami  | 27 Candle handmade                                       |
| 3 Woodwork item  | 28 Mosaic  |
| 4 Metalwork item   | 29 Handmade Fairy garden item or Miniature               |
| 5 Leatherwork any item   | 30 Rock art  |
| 6 Basketry – any variety   | 31 Printmaking   |
| 7 Beadwork – any beaded craft other than jewelry                 | 32 Blacksmithing: an article shaped by forging           |
| 8 Collage  | 33 Polymer Clay item                                     |
| 9 Pottery  | 34 Drawing Dry Media (Pencil, Charcoal, etc)             |
| 10 Jewelry, any item or set                                      | 35 Drawing Liquid Media (Marker, ink etc.)               |
| 11 Tanned Pelt   | 36 Watercolour Painting                                  |
| 12 Clay pot hand painted   | 37 Acrylic painting                                      |
| 13 Etched glass or mirror  | 38 Oil painting  |
| 14 Novelty item, any. e.g: fridge magnet, badges etc.            | 39 Hand Painted Photography                              |
| 15 Warm welcome, door or entry decoration e.g. Decorative wreath | 40 Pastel, oil or chalk                                  |
| 16 Decorative painting, on any item                              | 41 Mixed media other than painted photography            |
| 17 Soap, any variety   | 42 Cartoon Character                                     |
| 18 Garden ornament, any medium                                   | 43 Any Other Art or Craft not listed                     |
| 19 Eggery, any   | 44 Indigenous beading                                    |
| 20 Salvage art – Useful item made from recycled materials        | 45 Indigenous carving                                    |
| 21 Upcycled functional item e.g.: Chalk painted item             | 46 Indigenous regalia, Child or Adult                    |
| 22 Model from a kit  | 47 Jar craft decorative or functional using mason jar(s) |
| 23 Wind chime  | 48 Collection  |
| 24 Stained glass   | 49 Knot Work (e.g., Halter)                              |
| 25 Glass fusing  | 50 Tied Fishing fly, 1 mounted                           |
|  | 51 Theme Entry, any medium                               |

# Section 06 – Photography

Contact Information: Jonathan Kacki Section Head - jonkacki@gmail.com

## Photography Section Rules:

1. All classes and entries will accept film or digital photography printed on photo print paper.
2. Photos must have been taken by entrant in the past two years. Exception class 06-C-6, Collage or Composite.
3. Only one entry per class per entrant. Each photo may be entered in one class only.
4. Photos must be securely mounted on WHITE or BLACK poster board, with a 1.5 inch or 3.8 cm surrounding the image. No framing or matting.
5. No borders on photo itself; photo must be printed to edge of photo paper.
6. No identification or captions on front of entries (except where specified in a class description).
7. Entries not conforming to the rules might not be judged or displayed.
8. Photos must match the class description (e.g. cannot enter a “Seascape” picture in the “Animal” class)

## Section 06 - Division A - Standard Size (4 x 6) Prints

### Classes:

- |  |   |
|--|---|
| 1 Sunrise or Sunset                        | 21 Spirit of the Fair   |
| 2 Patterns or Textures                     | 22 Any Other Subject  |
| 3 Clouds                                   | 23 Pets   |
| 4 Seascape                                 | 24 Night Photography  |
| 5 Landscape                                | 25 Mushroom, Fungus or Lichen   |
| 6 Flowers or Plants                        | 26 Urban Landscapes   |
| 7 Portraits                                | 27 Four Seasons - Four 4"x 6" photos arranged with<br>1" or 2.5 cm between photos and mounted with<br>poster board. |
| 8 People                                   |   |
| 9 Food                                     |   |
| 10 Humour                                  |   |
| 11 Childhood                               |   |
| 12 Transportation                          |   |
| 13 That's Sooke                            |   |
| 14 Architecture (Buildings and Structures) |   |
| 15 People at Work                          |   |
| 16 Insects                                 |   |
| 17 Action/Movement                         |   |
| 18 Birds                                   |   |
| 19 Faraway Places                          |   |
| 20 Wildlife                                |   |



## ***Section 06 - Photography, continued***

### **Section 06 - Division B - Enlargements Black and White**

#### **Classes:**

- 1 Action/Movement
- 2 People
- 3 Nature
- 4 Flowers or Plants
- 5 Any Other Subject

### **Section 06 - Division C - Enlargements Colour Classes:**

- 1 Action/Movement
- 2 People
- 3 Nature
- 4 Flowers or Plants
- 5 Any Other Subject
- 6 Collage or Composite which best illustrates this year's Fair Theme (image size max 12" x 16" mounted as per rule #4)

### **Section 06 - Division D - Digital Manipulation**

#### **Classes:**

- 1 Entry using digital manipulation on one or more photographs to create a new photographic image. Entry requires using software not merely to improve the technical quality of the photograph (s), but to significantly alter the original(s) to create a new photographic work of art. Any subject, min. 4" x 6" to max. 8" x 10" prints, mounted on poster board, with the main original photo and finished photo side-by-side 1" apart, and with 1.5" surrounding border.
- 2 Light Painting using photographic techniques of moving a light source while taking a long exposure photograph. Any subject min 4" x 6", max 8" x 10" as per photography rules.



**Vancouver Island  
Propane Services Ltd.  
250.479.4227**

# Section 08 – Literary Art

Contact Information: Section Head - Gloria Gillingham - 250-477-9507

## Literary Arts Section Rules:

1. Make the entry fit on one 8.5 x 11 inch paper. The number of words which fit is dependent upon the font and font size, however, **the minimum font size is 10**. Mount 8.5 x 11 inch paper on black construction paper or board, with 1.5 inch (3.81 cm) border, making finished size 11.5 x 14 inch maximum (except class 08-A-1). Postcards may be displayed as 4 x 6 inch with a finished size of 7 x 9 inch.
2. Entries may be on any shape of paper, round, diamond shape, vertical rectangle, horizontal rectangle as long as the paper with writing is maximum 8.5 x 11 inch and mounting board does not exceed 11.5 x 14 inches.
3. Entries may be smaller than the maximum size.
4. Entries may be calligraphy, hand written, computer printed, and may use any font style or colour.
5. The entry must be an original creation of the entrant, created in the last 2 years and not previously entered in the Sooke Fall Fair.
6. Excerpts and portions of previously published material are accepted.
7. To speed up the judging process, we request that each submission, in addition to being entered as per rule #1, be either emailed in advance to Sooke Fall Fair, email address: SookeFallFairEmail@gmail.com or mailed to Sooke Fall Fair P.O. Box 291, Sooke, BC V9Z 0S9. This will allow the judges to take their time in reading each entry. Do not worry if you enter on Thursday night; all entries will be judged equally.

Entries which have been emailed will be mounted by the section head and displayed or you can mount your own, please indicate on your entry form. Entry tags can be picked up and paid for at the Market at the Community Hall on August 26, 10–2 pm or on Thursday, September 7, 2–8 pm.

## Section 08 - Division A - News – Traditional and Digital

### Class:

- 1 Design and Content – Theme Related "Wild West Coast". Design a web, newspaper or newsletter page for print or broadcast, or a blog post.

## Section 08 - Division B - Stories

### Classes:

- 1 Humour – an amusing/humorous story about finding a living thing or artifact along our coast
- 2 Fiction – Sci-Fi or Fantasy – a story about a creature from the deep (any genre other than humorous)
- 3 A story relating to recent changes in the Sooke Region
- 4 Excerpt on any Subject
- 5 Your story must contain these 6 words: seeing, finding, exploring, feeling, sensing, discovering. (Any tense of the words is acceptable)
- 6 Non-Fiction: Tell your story of time spent enjoying watching the activity along the Sooke coastline
- 7 Fiction: Share your version of a story that happened in or around Sooke to someone you know
- 8 Social Media Post on theme "Protecting our Ocean" (max 100 words – may include photo)
- 9 "Letter to the Editor" expressing concern over the decreasing numbers of salmon and herring
- 10 Short story – Living on and Loving the West Coast
- 11 Short Story – "Sea Friendly" write a short story relating to relating to caring for the Salish Sea
- 12 Postcard Story (max 50 words)

## Section 08 - Literary Art, continued

### Section 08 - Division C – Poetry

#### Classes:

- 1 Poem – any style except Haiku or Concrete
- 2 Haiku
- 3 Concrete
- 4 Epitaph – real or imaginary person, animal or thing
- 5 Poem – My Life as a Whale/Seal/ Salmon
- 6 Create an Ode to: a squid, a sea star or a crab

### Section 08 - Division D – Children’s Story, Book or Poem

#### Classes:

- 1 Create a story, poem or book for a child
- 2 Any other variety of written style (e.g. script, music lyrics, booklet, etc.)

### Section 08 - Division E – Other

#### Class:

- 1 Any Other Variety of Written Style not listed



**OPEN**  
7 Days A Week  
7:00 a.m. to 9:00p.m.

Locally Owned  
and Operated

250-642-2744

**SOOKE CENTER  
MALL**

6661 Sooke Rd.,  
Box 979  
Sooke, B.C.  
V9Z 0A1



**Village Food  
Markets**

**YOUR FULL SERVICE SUPERMARKET**

\* GROCERIES \* MEAT \* FISH \* DAIRY \* PRODUCE  
\* BAKERY \* DELI \* BULK \* FRESH CUT FLOWERS

**BETTER BECAUSE WE CARE**

[www.villagefoodmarkets.com](http://www.villagefoodmarkets.com)

# Section 09 - Wine & Beer

Contact Information: Section Head - Sheila Hubbard - 250-642-5502

## Wine & Beer Division Rules

1. Wine of any year's vintage may be exhibited.
2. All wines and beers must have been made by the exhibitor by the process of fermentation.
3. Each competitor may enter a maximum of 3 entries in each class, but each entry must be the product of a different ingredient or, in the case of grapes, from different varieties.
4. Wine entries must be presented without labels – best if in wine bottles of any colour with corks. A ½ bottle (375 ml) is allowed.
5. Artificial flavouring or colouring must not be used.
6. Wines will be judged for clarity and presentation, for bouquet, and for taste.
7. Beer entries must be presented without labels in standard 341 ml beer bottles.

### Section 09 - Division A - Wine

#### Classes:

- 1 White Table, Grape, Dry
- 2 Red Table, Grape, Dry
- 3 White Table, Non-Grape, Dry
- 4 Red Table, Non-Grape, Dry
- 5 White Social, Grape, Medium or Sweet
- 6 Red or Rosé, Social, Grape, Medium or Sweet
- 7 White Social, Non-Grape, Medium or Sweet
- 8 Red or Rosé, Social, Non-Grape, Medium or Sweet
- 9 Rose Table Wine, any Ingredient, Dry or Medium
- 10 Ice. Wine
- 11 Blackberry Wine
- 12 Liqueur - Any Variety



### Section 09 - Division C - Mead

#### Classes:

- 1 Dry Mead, Plain, 1 (750 ml clear bottle)
- 2 Sweet Mead, Plain, 1 (750 ml clear bottle)
- 3 Fruit and/or Spiced Mead, 1 (750 ml clear bottle)

### Section 09 - Division D - Cider

#### Class:

- 1 Cider, any type, 2 Bottles

### Section 09 - Division B – Beer

#### Classes:

- 1 Beer, Lager, 2 Bottles
- 2 Beer, Ale, 2 Bottles
- 3 Beer, Dark Ale, 2 Bottles
- 4 Root Beer, 2 Bottles
- 5 Ginger Beer, 2 bottles



### Section 09 - Division E - Spirits

#### Class:

- 1 Spirits, any type, 1 Bottle

# Notice to Exhibitors - Regulations

1. An entry form must be filled out for every item entered in the Fair, including free entry items, such as Kids' Contests. We prefer Advance Entries as this allows us to create accurate and timely entry tags and reduce the Late Entry lineups on Thursday and Friday nights.
2. Entry fees are \$1.00 per adult entry and \$ .50 for juniors and youth when submitted no later than 5:00 pm, on Tuesday September 5. Late entries submitted on Thursday, September 7 and Friday September 8 will be charged \$2.00 for adult entry, \$1.00 for juniors and youth. Entries are open to everyone, regardless of where you reside. Age restrictions apply only to the Junior and Youth Sections. Sorry, no refunds.
3. Mail entry forms to: Sooke Fall Fair Association, Box 291, Sooke, BC, V9Z 0S9; or drop off in the entry box at Forbes Pharmacy 6691 Logan Lane; or email to SookeFallFairEmail@gmail.com. Individuals who submit their entry forms by August 23 may pickup and pay for their tags at the August 26 Market in the Sooke Community Hall. Otherwise, tags will be at the Community Hall on Thursday, September 7, 2-8 pm and Friday, September 8, 2-7:30 pm. Do not send money with your entry form.
4. Exhibitors may make only one entry in each class except as specified in the section rules. All exhibits must be grown by or be the work of the exhibitor and must have been completed in the two years prior to the fair.
5. All entries must be made on official forms. Only one exhibitor per form (except where specified). Please make photocopies as necessary or download from website [www.sookefallfair.ca](http://www.sookefallfair.ca). Any entry form used by more than one entrant will be void. The entry form is located in the middle of the catalogue.
6. Some sections require advance notification due to size limitations and set up requirements. Please refer to individual sections for detailed instructions, such as Animal Sections.
7. **Non-Perishable** Entries will be accepted at the Sooke Community Hall on Thursday, September 7 from 2:00 to 8:00 pm. **Perishable** Entries will be accepted on Friday, September 8, from 2:00 to 7:30 pm. Signs will direct entrants to applicable entrance. We ask exhibitors to complete entry forms before arriving at the hall. Animals brought Saturday morning should be presented with entry tags. If any entry form has not been previously submitted for the animal, please provide a completed entry form with payment attached.
8. Sooke Fall Fair Association takes every precaution to ensure the safety of all exhibits, but should any item be lost, damaged or stolen, the Association will not recognize any claim for payment or the value of any portion thereof.
9. The Judge's decisions are final. In the absence of competition in any class, the judges have the power to award as they deem worthy.

## Exhibitors Obligations and Liabilities

10. The committee reserves the right to refuse any entries from an exhibitor who has not complied with the rules or may cancel any or all prizes awarded to such an exhibitor.
11. No one will be admitted to the exhibit areas on Saturday morning during the judging except Judges and Officials.
12. No claim or injury to any person or property shall be assented or suit instituted or maintained against the Sooke Fall Fair Association, its officers, or their agents, by or on behalf of any visitor, exhibitor, or any person, firm or corporation, or their agents, representatives, servants, or employees having license of privilege to visit or exhibit any section of the Sooke Fall Fair.
13. Entries must not be removed before 5:00 pm and no later than 6:00 pm on Sunday, September 10. Livestock can be removed after 3:00 pm Sunday.

## Notice to Exhibitors - Regulations (continued)

### Trophies and Awards

14. Prize money must be picked up at the Community Hall (location to be announced) between 4:00 pm and 5:30 pm, Sunday, September 10. Note: Any monies not collected by 5:30 will revert to the Sooke Fall Fair Association.
15. Trophies and Awards will be based on 3 points for first, 2 points for second and 1 point for third. Prize money is \$3 for first, \$2 for second and \$1 for third. To qualify for a "Most Points" trophy an individual must have a minimum of 2 winning entries in the applicable section. In the event of a points tie, the person with the most first place entries wins. At the Awards Ceremony, the winner will receive a framed photo of themselves with the trophy. Their name will be engraved on the trophy. Trophies will not be taken home by the winner.
16. Children must be accompanied by a responsible adult.
17. Please respect all exhibits. Do Not Touch.
18. No Smoking, Drugs or Alcohol are permitted at the Fair.

***Every effort is made to ensure that the information in this catalogue is accurate. Please consult the website before entering since if changes occur or errors are found in the catalogue after printing, the new information will be posted on our website.***

### Displaying our Best Sooke Merchant Spirit

**BEST MERCHANT Trophy and Rosette** awarded annually for the window or in-store display promoting the Sooke Fall Fair.

Consideration will be given to originality and use of our theme "**Wild West Coast**". Submit entries to Sooke Fall Fair Box 291, Sooke, B.C. V9Z 0S9 or email to [SookeFallFairEmail@gmail.com](mailto:SookeFallFairEmail@gmail.com).

Deadline for entries is August 25, 2023.

Judging takes place Friday and Saturday, September 1st and 2nd.

### Merchant Display Entry Form 2023

Business Name \_\_\_\_\_

Address \_\_\_\_\_

Contact Name (s) \_\_\_\_\_

Phone Number \_\_\_\_\_

Email Address \_\_\_\_\_



## Entry Form 2023

Last Name \_\_\_\_\_ First Name \_\_\_\_\_ Phone \_\_\_\_\_

Mailing Address \_\_\_\_\_

City \_\_\_\_\_ Prov. \_\_\_\_\_ Postal Code \_\_\_\_\_ Age (if Junior) \_\_\_\_\_

Email Address \_\_\_\_\_

<p style="text-align: center;"><b>Entry Fees - Advance - Adult \$1.00, Youth &amp; Junior 50 cents</b>  <b>Late Thursday and Friday night entries - Adult \$2.00, Youth &amp; Junior \$1.00</b></p> <p>Drop off Entry Forms at Forbes Pharmacy or mail to Sooke Fall Fair, Box 291, Sooke, BC V9Z 0S9 or scan and email to <a href="mailto:SookeFallFairEmail@gmail.com">SookeFallFairEmail@gmail.com</a> no later than 5:00 pm Tuesday, Sep 5 2022. Preferably send entry form in PDF or a scanned Jpeg. Do Not Include Payment. Late entries: 2 - 8 pm, Thursday, Sept 7 and 2 - 7:30 pm, Friday, Sept 8, at Fair only.</p> <p>Entrants submitting forms by Wednesday, Aug 23, 2023 may pick up and pay for tags at the Saturday, Aug 26 Market at Sooke Community Hall.</p>	<table border="1" style="width: 100%; border-collapse: collapse;"> <tr> <th colspan="2" style="text-align: center;">Office Use Only</th> </tr> <tr> <td colspan="2" style="height: 20px;">ID#</td> </tr> <tr> <td style="width: 50%;">Entries Input</td> <td style="width: 50%;"></td> </tr> <tr> <td>Tags Printed</td> <td></td> </tr> <tr> <td>Payment Received</td> <td></td> </tr> <tr> <td>Payment Entered</td> <td></td> </tr> </table>	Office Use Only		ID#		Entries Input		Tags Printed		Payment Received		Payment Entered	
Office Use Only													
ID#													
Entries Input													
Tags Printed													
Payment Received													
Payment Entered													

**Disclaimer:** I absolve Sooke Fall Fair Association of any liability for loss, damage or theft of entries or exhibits. I make the following entries subject to the rules and regulations published in the Sooke Fall Fair catalogue "Notice to Exhibitors".

Signature of entrant, parent or guardian \_\_\_\_\_

I approve being in pictures that are published and receiving emails from us for strictly fair events - YES or NO - Please circle your preference.

Section	Division	Class	Description	Entry Fee Adult	Junior/ Youth
01	A	8	Crab, Apples, 8 (example)	\$1.00	
21	B	1	White Yeast Bread, 1 Loaf (example)		.50
Thank you for entering in the Sooke Fall Fair - Your entries make the Fair				<b>TOTAL</b>	

Need more entry forms, visit our website [www.sookefallfair.ca](http://www.sookefallfair.ca) or photocopy this entry form. See next page.

<b>Section</b>	<b>Division</b>	<b>Class</b>	<b>Description</b>	<b>Entry Fee Adult</b>	<b>Junior/ Youth</b>
Thank you for entering in the Sooke Fall Fair - Your entries make the Fair				<b>TOTAL</b>	

# Section 10 – Honey

Contact Information: [SookeFallFairEmail@gmail.com](mailto:SookeFallFairEmail@gmail.com)

## **Honey Section Rules:**

1. Exhibits of honey, wax, mead, granulated honey, etc., must be the production of the exhibitor.
2. 10-B-1, 2 & 3 are the novice exhibitors who have not entered in previous honey shows or competitions.
3. Classes 10-A-4, 5 & 6 (honeycomb) should be wrapped in transparent protective coating.

## **Section 10 - Division A – Adult**

### **Classes:**

- 1 Liquid Honey, White, 5 (12 oz jars)
- 2 Liquid Honey, Golden, 5 (12 oz jars)
- 3 Liquid Honey, Amber, 5 (12 oz jars)
- 4 Honeycomb, 1 Shallow Frame with Suitable Stand
- 5 Honeycomb, 1 Standard Deep Frame with Suitable Stand
- 6 Honeycomb, 4 Packaged Sections, Ross Rounds or Wood Frames
- 7 Chunk Honey, Packed in 3 (12 oz jars)
- 8 Creamed Honey, 3 (12 oz jars)
- 9 Beeswax Cakes, 2 Uniformly Moulded Cakes Between 1/2 and 1 pound
- 10 100% Pure Beeswax Candles, 2 Pair, Dipped
- 11 100% Pure Beeswax Candles, 2 Pair, Moulded
- 12 Beeswax Fancy Rolled or Decorative Candles
- 13 Educational Display, Anything to do with Production of Honey
- 14 Large Honey Display, Minimum Amount 22 lbs (10 kg)

## **Section 10 - Division B – Novice**

### **Classes:**

- 1 Liquid Honey, White, 5 (12 oz jars)
- 2 Liquid Honey, Golden, 5 (12 oz jars)
- 3 Liquid Honey, Amber, 5 (12 oz jars)
- 4 Youth First Time Entry (18 years or under), 2 (12 oz jars of honey) or frame of honeycomb, any kind

# Section 11 – Animals (Adult)

Contact Information: [SookeFallFairEmail@gmail.com](mailto:SookeFallFairEmail@gmail.com)

## **Animal Section Rules:**

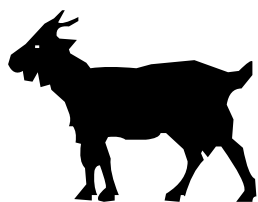
1. Section 11 is for exhibitors for ages 15 and up, section 31 is for ages 2 to 14.
2. Refer to “Notice to Exhibitors” for exhibitor information.
3. Junior and Adult animals are displayed separately. Animals entered in the Junior Section are not entered in the Adult Section and vice-versa.
4. Animals entered in any variety or any other variety must be named as to breed.
5. All animals must be groomed before exhibiting.
6. Any animal with mites or lice or signs of illness will not be allowed in the show area.
7. Be sure your carrying cage for show is leak proof. Cages are not supplied, unless pre-arranged with Section Head. Water and feed will be provided.
8. Two or more animals in the same cage must be different colours, for quick retrieval of animals for judging.
9. Rabbits and Cavies are to be placed in separate cages.
10. Please let Section Head know if you wish to display materials in the show, must be in good condition.
11. Animals to be dropped off Saturday morning 7:30 am and Sunday morning 8:00 am.
12. Judging commences at 9:00 am Saturday, only Judges, Section Head and helpers are permitted in the animal area.
13. Exhibitors are not to remove animals from their cages until judging is complete.
14. No animals are to be left overnight. Animals may be removed at 5:00 pm Saturday and 3:00 pm Sunday.

## **Large Farm Animals**

Space permitting, we are welcoming large farm animals to our Fair. We created divisions for these animals: “Any Other Farm Animal” (Division 11-N adult, 31-L junior) and “Goats” (Division 11-O adult, 31-M junior).

All entries will be judged, and ribbons, prizes and prize money will be awarded. We ask that you email the Fair at ([SookeFallFairEmail@gmail.com](mailto:SookeFallFairEmail@gmail.com)) in advance to reserve your spot. A \$20 deposit is required for each large animal; that will be returned, dependant upon inspection of area.

Bedding and manure must be removed by owner and the area tidied.



## **Attention!!**

**Please be advised that NO DOGS are allowed in the Farm Animal Areas.  
Please DO NOT FEED any of the Animals.  
Thank you**

## **Please become familiar with this order**

The Chief Veterinary Officer has issued an Animal Health Act (AHA) - General Order regarding the commingling of birds.

[General Order; April 19, 2022: Avian Influenza Commingling](#)

## Section 11 Animals, continued

### Section 11 - Division A - Poultry Standards

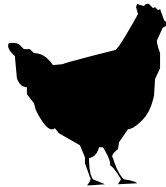
#### Classes:

- 1 Standard Cock
- 2 Standard Cockerel
- 3 Standard Hen
- 4 Standard Pullet

### Section 11 - Division B - Poultry Bantams

#### Classes:

- 1 Bantam Cock
- 2 Bantam Cockerel
- 3 Bantam Hen
- 4 Bantam Pullet



### Section 11 - Division C - Poultry – Backyard Variety - Standards Division

#### Classes:

- 1 Rooster or Cockerel, any Variety
- 2 Hen or Pullet, any Variety

### Section 11 - Division D - Poultry – Backyard Variety - Bantams Division

#### Classes:

- 1 Rooster or Cockerel, any Variety
- 2 Hen or Pullet, any Variety
- 3 Best Crowing Rooster, Standards or Bantam

### Section 11 - Division E - Waterfowl – Standard Duck

#### Classes:

- 1 Drake
- 2 Hen

### Section 11 - Division F - Waterfowl – Bantam Duck

#### Classes:

- 1 Drake
- 2 Hen

### Section 11 - Division G - Poultry – AOV

#### Classes:

- 1 Drake
- 2 Hen
- 3 Turkey

### Section 11 - Division H - Rabbits – Light Purebreds (Under 10 Pounds)

e.g. American Fuzzy Lop, Belgian Hare, Britannia Petite, Dutch, Dwarf Hotot, English Angora, English Spot, Florida White, French Angora, Harlequin, Havana, Himalayan, Holland Lop, Jersey Woolly, Mini Lop, Mini Rex, N. Dwarf, Polish, Rhinelander, Silver, Tan

#### Classes:

- 1 Doe
- 2 Buck
- 3 Doe and Litter\*
- 4 Fur, Buck or Doe
- 5 Wool, Buck or Doe

\* Not less than 2 young, between 6-8 weeks old

Rabbit Age: Junior: under 6 months

Senior: over 6 months

### Section 11 - Division I - Rabbits – Heavy Purebreds (10 to 20 Pounds)

e.g. American, Californian, Checkered Giant, English Lop, Flemish Giant, French Lop, Giant Angora, New Zealand Palomino, Palomino, Rex, Satin, Silver Fox

#### Classes:

- 1 Doe
- 2 Buck
- 3 Doe and Litter\*
- 4 Fur, Buck or Doe
- 5 Wool, Buck or Doe

\* Not less than 4 young, between 6-8 weeks old

Rabbit Age: Junior: under 6 months

Senior: over 6 months



### Section 11 - Division J - Rabbits – Mixed Breeds, Light (Under 10 Pounds)

#### Classes:

- 1 Doe
- 2 Buck
- 3 Doe and Litter \*
- 4 Fur, Buck or Doe
- 5 AOV, Buck or Doe

\* Not less than 2 young, between 6-8 weeks old

Rabbit Age: Junior: under 6 months

Senior: over 6 months

## ***Section 11 - Animals continued***

### **Section 11 - Division L - Cavy – Boar (male)**

#### **Classes:**

- 1 Junior Boar, 12-22 oz, up to 4 Months
- 2 Intermediate Boar, 22-32 oz, up to 6 Months
- 3 Senior Boar, over 32 oz, over 6 Months

### **Section 11 - Division M - Cavy – Sow (female)**

#### **Classes:**

- 1 Junior Sow, 12-22 oz, up to 4 Months
- 2 Intermediate Sow, 22-32 oz, up to 6 Months
- 3 Senior Sow, over 32 oz, over 6 Months

### **Section 11 - Division N - Any Other Farm Animal**

#### **Classes:**

- 1 Milking Cow
- 2 Pony or Miniature Horse
- 3 Sheep
- 4 AOV, any Other Farm Animal

### **Section 11 - Division O – Goats**

#### **Classes:**

- 1 Standard Size Female Goat (Doe)
- 2 Miniature Goat (Doe)

*Many thanks to the District of Sooke for the Community Grant leading to another successful Sooke Fall Fair.*

*This grant will greatly assist our organization by providing new material to enhance our livestock section.*



# Section 16 – LEGO

Contact Info: Mitchell Vowles 778-352-0061

## Age Groups

Division P - Preschool (ages 2 to 5)

Division A - Junior (ages 6 to 8)

Division B - Junior (ages 9 to 11)

Division C - Junior (ages 12 to 14)

Division Y - Youth (ages 15 to 18)

Division Z - Adult (ages 19 and older)

Listed here are the same classes for all 6 divisions; submit your entry form with the appropriate age class code (for example 16-P-1 for a Preschool entry).

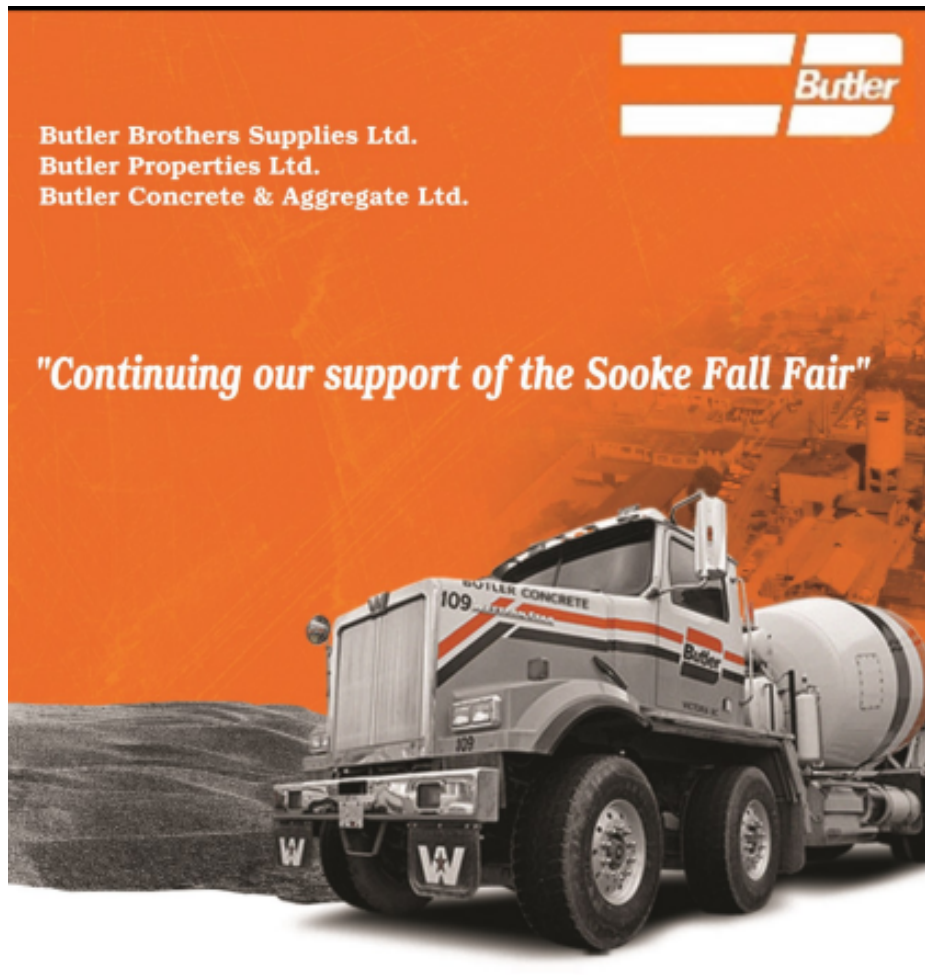
## Section 16 - Divisions P, A, B, C, Y, Z

### Classes:

- 1 LEGO creation, any theme
- 2 LEGO creation, using this year's theme
- 3 Mini LEGO creation, approximately 3 inches x 3 inches, any theme
- 4 Pokémon
- 5 Minecraft Figure or Creation using this year's theme.

### LEGO Section Rules:

1. Recommended size restriction 16" x 16" maximum as volunteers will be moving your creations.
2. Must be your own creation. Not from a kit.



# Section 20 – Preschool – Ages 2 to 5

Contact Information: Sandy Hull 250-886-8980

## Section 20 - Division A

### Classes:

- 1 Painted Rock (s)
- 2 Beading or Jewellery
- 3 Felt Pen Drawing
- 4 Watercolour Painting
- 5 Handmade Puppet or Toy
- 6 Coloured Pencil Drawing
- 7 Handmade Card
- 8 Seashore Arrangement
- 9 Sculpture (e.g. playdough, clay)
- 10 Junk Sculpture, recycled material
- 11 Mask, any medium
- 12 Any Sewn Article
- 13 Any Textile Project
- 14 Collage, Maximum Size 8" x 10" (21 cm x 26 cm), This year's theme
- 15 Creative Fruit or Vegetable (can use glue, pins, etc.)
- 16 Baked or Unbaked Square (3)
- 17 Nutritious Lunch (include food and list of items)
- 18 Photography, any theme (black & white or colour)
- 19 Colouring Book Page
- 20 Flower Arrangement
- 21 This year's Fair Theme
- 22 BEE Friendly – Sculpture of a BEE, any medium
- 23 Indigenous Theme Art or Creative Piece, any medium
- 24 Child and Parent Project (a project that adults helped work on with the child)
- 25 Any Article in Wood (no kits, own creation)
- 26 Any Article in Wood (from kits)
- 27 Rice Sock Buddy
- 28 Paper Roll Animals - using this year's theme
- 29 Flowers - Tissue paper, pipe cleaners and buttons in container, vase or jar, 3
- 30 Mason Jar "Scene" - (e.g. Terrarium, Water, Savannah, Dinosaurs, Fairies...)
- 31 Decorated Pine or Fir Cone
- 32 Yarn Needle Point on Plastic Canvas.
- 33 Handmade Paper, made from recycling paper, 1 sheet 8" x 11" or 20cm x 28cm using this year's theme. See sidebar on section 29 for hints on this.
- 34 Any Other Project not mentioned above

### Preschool Section Rules:

Maximum size 20" x 20" (50 cm x 50 cm) base in all categories.

**See LEGO (Section 16) and Growing Things (Section 22) for more classes!**



# Junior Sections - Overview

Contact information: Junior Section Coordinator Lî Crossgrove 778-678-2185

## **Junior Section Rules:**

1. Age group entry is your age as of the day of the Fair.
2. All work must have been done by the entrant.
3. All work must have been done in the last 2 years.
4. Remember to check the to Notice to Exhibitors (just before the entry form in the middle of the catalogue).

## **Note: For most Junior sections the age groups are**

Division A - (ages 6 to 8)

Division B - (ages 9 to 11)

Division C - (ages 12 to 14)

However, some sections allow younger or older exhibitors, so check each section for specific details.

Junior section welcomes everyone of all abilities. Entries are judged on effort and skill. If you have significant challenging creative abilities that make it difficult to compete against your age group, please talk to Lî Crossgrove your Junior Section Coordinator. She will explain how we make the Junior Section all inclusive.

## **These Junior Sections are co-located with these Adult Sections:**

Section 21 – Junior Kitchencraft with Section 03 Kitchencraft

Section 22 – Junior Growing Things with Section 01 Produce

Section 23 – Junior Canning with Section 03 Kitchencraft

Section 25 – Junior Flower Arranging with Section 02 Flowers

Section 31 – Junior Animals with Section 11 Adult Animals

## **Attention all 14 year olds:**

Congratulations! Next year you will graduate to the

**Teen Youth Section 35** for Ages 15 to 18,

Please check it out!

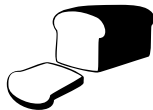
# Section 21 – Junior Kitchencraft

Contact Information: Candace Linde - 778-977-5771

Division A - (ages 6 to 8)  
Division B - (ages 9 to 11)  
Division C - (ages 12 to 14)  
Listed here are the same classes for all 3 divisions, submit your entry form with the appropriate age division code.

## Section 21 - Divisions A, B and C Classes:

- 1 White Yeast Bread, 1 Loaf
- 2 Brown Yeast Bread, 1 Loaf
- 3 Cake, Plain White or Chocolate
- 4 Cake, Decorated, any
- 5 Theme Entry, Decorated Cake (see rule 3)
- 6 Chocolate Chip Cookies, 3
- 7 AOV Cookies, 3
- 8 Quick Bread, 1 Loaf
- 9 Baked Squares, 3
- 10 Iced Brownies, 3
- 11 Muffins, 3
- 12 Muffins, Whole Grain Fat Free, 3
- 13 Pie, 1 (no cream or meat)
- 14 Cinnamon Buns, Non-Iced, 3
- 15 Nutritious Trail Snack (e.g. trail mix or fruit leather)
- 16 Sculpture of Bread, Cookie or Rice Krispies using this year's Theme
- 17 Nutritious Lunch (include food and list of items)
- 18 Any Other Kitchen Craft
- 19 Cake Pops, Decorated, 3
- 20 Suckers, Any Flavor, 3
- 21 Bannock
- 22 Smoked Salmon
- 23 Gift Basket
- 24 Dinner Rolls, White, 3 individual (no muffin tins)



## Junior Kitchencraft Section Rules:

1. All baking to be put on disposable trays, plates, foil covered cardboard, or foil pan.
2. All goods are to be covered with clear plastic wrap or placed in re-sealable plastic bags to allow easy access and closure after judging.
3. All entries must be made by entrant and from scratch except, Best Decorated Cake (class 5) which can be made from scratch or from a cake mix.
4. Do not ice cakes unless specified

**TIP:** As you bake throughout the summer, take the best 3 of each item, check them off on your list and store in your freezer until the morning you take in your entries



# Section 22 – Junior Growing Things

Contact Information: Anne Boquist - 250-642-3798

**TIP:** Entries requiring more than one should be as uniform as possible in colour, shape and size

Entrants may use glue, pins, etc. to decorate their creation. Be Creative!

## Section 22 - Division A - (ages 6 to 8)

### Class:

- 1 Vegetable Creation Carved or Decorated using at least 2 vegetables or fruit

## Section 22 - Division B - (ages 9 to 11)

### Class:

- 1 Vegetable Creation Carved or Decorated using at least 2 vegetables or fruit

## Section 22 - Division C - (ages 12 to 14)

### Class:

- 1 Vegetable Creation Carved or Decorated using at least 2 vegetables or fruit



## Section 22 - Division D (ages 2 to 18)

Note new age range

### Classes:

- 1 Sunflower Head, 1
- 2 Carrots, 3
- 3 Potatoes, 3
- 4 Corn, 1 Cob
- 5 Tomatoes, 3
- 6 Cherry Tomatoes, 6
- 7 Beets, 3
- 8 Beans, 3
- 9 Blackberries, 8
- 10 Herbs, 3 Different Ones, Labelled
- 11 Largest Pumpkin
- 12 Oddest Shaped Pumpkin
- 13 Longest Zucchini
- 14 Heaviest Zucchini
- 15 Longest Bean (bean must be freshly picked)
- 16 Zucchini, 2
- 17 Any Other Fruit
- 18 Heirloom tomatoes (3) – name variety if possible
- 19 Garlic, any variety 2
- 20 Layered compost display (include worms) – max size 20" square
- 21 Any Other Vegetable



# Section 23 – Junior Canning

Contact Information: Candace Linde - 778-977-5771

Division A - (ages 6 to 8)  
Division B - (ages 9 to 11)  
Division C - (ages 12 to 14)  
Listed here are the same classes for all 3 divisions, submit your entry form with the appropriate age division code.

## Junior Canning Rules:

All jars to be clean, labelled and sealed.  
Label contents and date.

### Section 23 - Divisions A, B and C

#### Classes:

- 1 Jam or Jelly, 1 Jar
- 2 Canned Fruit, 1 Jar
- 3 Canned Vegetables, 1 Jar
- 4 Pickles, any Variety, 1 Jar
- 5 Canned Salmon, 1 Jar
- 6 Any Other Canning, 1 Jar

### Section 23 - Division D - (Open to ages 6 to 18)

#### Class:

- 1 Eggs, 6 in a Basket, Name Type (e.g. goose)



# Western Foods

- Grocery • Meat • Deli • Bakery • Produce
- Large Selection of Organic, Gluten Free and Dairy Free Products

*Your Community Food Store*

*Open 7 Days a Week*

SOOKE  
6660 Sooke Road  
7:00am – 9:00pm

# Section 24 - Junior Flower Arranging

Contact Information: [SookeFallFairEmail@gmail.com](mailto:SookeFallFairEmail@gmail.com)

Division A - (ages 6 to 8)  
Division B - (ages 9 to 11)  
Division C - (ages 12 to 14)  
Listed here are the same classes for all 3 divisions, submit your entry form with the appropriate age division code.

## Junior Flower Arranging Rules:

1. JUDGING STANDARDS: Flowers are judged against perfection and not against other entries. If an entry requires more than one item, look for uniformity of size, colour and shape.
2. Dahlias & Chrysanthemums should have two leaves attached to stem and showing above the top of the container, except in arrangements.

## Section 24 - Divisions - A, B and C

### Classes:

- 1 Single Bloom, any Variety, no other buds on stem
- 2 Teacup Arrangement
- 3 Flower Arrangement
- 4 Miniature Arrangement, Under 6" (15 cm)
- 5 Dried Flower Arrangement
- 6 Dahlia Bouquet
- 7 Cactus Garden, Maximum Size 12" x 12" (30 cm x 30 cm)
- 8 Herb Garden, in Own Container, Labelled
- 9 Miniature Garden, Max Size (16" x 16") (40 x 40 cm) Be Creative
- 10 Flowering Shrub, 1 Branch
- 11 Fairy Garden, max size (16" x 16")
- 12 Pumpkin Arrangement
- 13 A farm design using flowers to create a farm on a pie plate, may include toys and figures.
- 14 Mixed flower design in a recyclable container



## Section 24 - Division D - (Open to ages 6 to 14)

### Classes:

- 1 Terrarium, Maximum Size 12" x 12" (30 cm x 30 cm)
- 2 Hanging Basket, Maximum 12" (30 cm) Pot
- 3 Shoe or Boot Arrangement

### Carnivorous Plants

- 4 Venus Flytrap
- 5 Sundew Plant
- 6 Pitcher Plant

# Section 25 – Junior Art

Contact Information: Kamara Llewellyn

250-516-0767

Division A - (ages 6 to 8)

Division B - (ages 9 to 11)

Division C - (ages 12 to 14)

Listed here are the same classes for all 3 divisions, submit your entry form with the appropriate age division code.

## Junior Art Rules:

Maximum size 11" x 17" (28 cm x 43 cm) except paintings which must be no larger than 20" x 24" (50 cm x 60 cm). Dimensional work only – No picture frames. No glass. Art must be mounted on construction paper, 2 cm border maximum.

## Section 25 - Divisions - A, B and C

### Classes:

- 1 Black and White Drawing (pencil or ink)
- 2 Coloured Drawing, any medium
- 3 Sculpture, any medium
- 4 Original Cartoon Strip
- 5 Original Cartoon
- 6 Water Colour Painting
- 7 Oil or Acrylic Painting on Canvas
- 8 Oil or Acrylic Painting on Paper
- 9 Portrait, any medium
- 10 Collage
- 11 House and Home, any media
- 12 Computer Generated Art (can be hand coloured)
- 13 Poster using this year's Theme
- 14 Theme "That's Sooke" any 2 dimensional media
- 15 Any Other Art Project not mentioned above
- 16 Indigenous Design Drawing
- 17 Indigenous Design Painting
- 18 Indigenous Art, any medium
- 19 "BEE Friendly" – Honey Bees in Art, any medium
- 20 Theme Project, any medium
- 21 Junk Sculpture (use recycled materials)
- 22 Greeting Card or Thank You Card

# Section 26 – Junior Writing

Contact Information: Section Head - Serena L. 250-642-0098

## **Junior Writing Rules:**

Preferably entries will be emailed in advance to SookeFallFairEmail@gmail.com/  
Mailed (posted) entries and Thursday night (Sept 7th) entries will be accepted too.

For emailed entries: Please printout your entry or entries and bring them on Thursday for exhibition.

**TIP:** *If you can talk, you can write. If writing is a challenge for you, tell someone a story and have them write it down for you.*

## **Section 26 - Divisions - A, B and C Classes:**

- 1 Penmanship, short Poem
- 2 Original Poem
- 3 Original Story, 2 Pages Maximum
- 4 Haiku
- 5 Essay using this year's Theme
- 6 Children's Picture Book
- 7 A "How To" theme story
- 8 French Story
- 9 Theme Story
- 10 Indigenous Story
- 11 Indigenous Children's Story
- 12 Story about "What I like about the Sooke Fall Fair"
- 13 What "Captain BEE Amazing" could do to make the earth a better place (fact or fiction). Picture may be included
- 14 Create your own Sustainability Super Hero (composting, habitat creation, creative recycling...) Give you super hero a name and tell your story. Picture may be included.
- 15 Essay: Future Planning. Ideas to make the future a better place.
- 16 Letter to the Future You
- 17 Essay: "If I were a..."
- 18 Original Song
- 19 Original Joke

Division A - (ages 6 to 8)  
Division B - (ages 9 to 11)  
Division C - (ages 12 to 14)  
Listed here are the same classes for all 3 divisions, submit your entry form with the appropriate age division code.

# Section 27 – Junior Photography

Contact Information: Section Head Laura Vowles 778-352-0061

Division A - (ages 6 to 8)  
Division B - (ages 9 to 11)  
Division C - (ages 12 to 14)  
Listed here are the same classes for all 3 divisions, submit your entry form with the appropriate age division code

## Junior Photography Rules:

1. Unless specified for special categories, ALL photography to be regular 4" x 6" prints mounted on black or white paper with 1.5" (3.8cm) surrounding border.
2. Photos must have been taken in last 2 years.
3. Digitally Enhanced photography all sections: mount the original 4" x 6" and the digitally enhanced or changed photo side by side 1" (2.5cm) apart with a 1½" (3.8cm) border.

For more information on Digitally Enhanced Photography, see Section 06 Division D.

## Section 27 - Divisions - A, B and C

### Classes:

- 1 Playground Fun
- 2 People
- 3 Flowers
- 4 Seasonal Fun
- 5 Animals
- 6 Landscape or Scenery
- 7 Funniest
- 8 Group Photo
- 9 "That's Sooke"
- 10 Water Fun
- 11 Black and White Photo
- 12 Action Photo
- 13 Nature
- 14 Bloopers
- 15 Mushroom, Fungus or Lichen
- 16 Digitally Enhanced Photograph (see rule 3 above)
- 17 Theme Photo
- 18 Grandparent(s)/Elder(s)/Mentor(s)/Role Model(s)
- 19 Old Buildings
- 20 Old Things
- 21 Black and White Family Photo
- 22 "Selfie" (self portrait)
- 23 Indigenous Theme
- 24 "BEE Friendly" – Bees at Work
- 25 Birds
- 26 Insects
- 27 Portraits
- 28 Before and After: Place photos side by side 1" or 2.5cm apart with a 1.5" or 3.8cm surrounding border.



# Section 28 – Junior Fibre Arts

Contact Information: Section Head Erin L. 250-642-0098

Division A - (ages 6 to 8)  
Division B - (ages 9 to 11)  
Division C - (ages 12 to 14)  
Listed here are the same classes for all 3 divisions,  
submit your entry form with the appropriate age division  
code.

**TIP:** *Don't know what to do?*

*Search the internet for:*

**"Fiber Arts Ideas for Kids"**

*There are many ideas.*

*Then let your imagination go.*

**TIP:** *Take a favourite shirt that  
you have grown out of and turn it  
into something new like a pillow,  
reusable bag, hot pad, framed  
art....*

## Section 28 - Divisions - A, B and C

### Classes:

- 1 Any Knitted or Crocheted Item
- 2 Knitted or crocheted scarf or toque
- 3 Embroidery
- 4 Cross Stitch
- 5 Sewn article of clothing
- 6 Sewn accessory (household, pot holders, placemats, pillows, flag, wall hanging...)
- 7 Stuffed animal, doll or toy (includes doll clothes)
- 8 Quilt
- 9 Any other sewn article
- 10 Any woven article (natural fibres, Salish, cedar)
- 11 Painted or tie dyed T-shirt
- 12 Any item from recycled fibres or fabric (includes remake of something new from something old)
- 13 Project using this year's theme.
- 14 Any Indigenous fibre arts design
- 15 Felting, any design
- 16 Any other fibre arts method
- 17 Hand knitted or Hand Crocheted Item

# Section 29 – Junior Hobbies

Contact Information: Dianne M. [estermat2218@gmail.com](mailto:estermat2218@gmail.com)

Division A - (ages 6 to 8)  
Division B - (ages 9 to 11)  
Division C - (ages 12 to 14)  
Listed here are the same classes for all 3 divisions, submit your entry form with the appropriate age division.

## Section 29 - Divisions A,B,C

### Classes:

- 1 Bookmark, any medium
- 2 Any Article in Wood (no kits, own creation)
- 3 Any Article in Wood (from kits)
- 4 Wooden Stick Construction (e.g. Popsicle, toothpick)

### LEGO Entries are now in LEGO SECTION 16

- 6 Mosaic Article
- 7 Model from a Kit (judged on assembly and finish)
- 8 Handmade Paper, made from recycling paper, 1 sheet 8x11" or 20x28cm using this year's theme. See guide on the right for help.
- 9 Useful Item made from Recycled Materials
- 10 Mask, any medium
- 11 Papier-Mâché
- 12 Jewelry, Necklace and/or Earrings
- 13 New Jewelry made from old Jewelry
- 14 Jewelry, any Other Item
- 15 Handmade Soap or Toiletries
- 16 Handmade Wooden Birdhouse
- 17 Handmade Mason Bee House
- 18 Animal Sculpture, any medium (e.g. playdough, clay)
- 19 Pottery
- 20 Christmas Decoration using recycled materials
- 21 Greeting Card, any medium
- 22 Mobile or Wind Chime
- 23 Seashore Theme, any Media, Max Size 16" x 16"
- 24 Any Other Hobby not listed
- 25 Theme Project
- 26 Science Fair Display using this year's theme

### Handmade Paper

Tear paper into small strips. Mix with water in a bowl to create a slurry. Let sit for 24 hrs. Scoop out mushy paper paste. Squeeze out the excess water with your hands. Blend in a blender until it's a gooey pulp. Add more water to the blender mix if you need too. Sieve the "goo" by spreading it out on a screen over a towel over a flat baking pan or plastic tub. Press down on your pulp to remove excess water. Place a towel on top of the screen and press against your pulp to remove even more water. Carefully turn everything over, remove the screen, leaving your pulp on your towel, and wait for your "new paper" to thoroughly dry on your towel. Measure and trim your paper to an 8" x 11" or 20 cm x 28 cm sheet.

The thicker your paper is, the longer it will take to dry!

You can add vegetable or flower seeds to your wet gooey pulp and let them "set" in your paper. Then, you can plant your "seed paper" later, or gift them to family and friends.

- 27 Indigenous Carving, any medium
- 28 Indigenous Beading, any variety
- 29 Indigenous Drum
- 30 Leather Work
- 31 Any Other Indigenous Hobby
- 32 Yarn Needlepoint on plastic canvas. Maximum size 12"x12" 30cm x 30cm.
- 33 Beading, any variety or style
- 34 Growing Crystals - Longest. Use Epsom salt, Coarse Salt or Sugar. Food colouring can be used.
- 35 Growing Crystals - Biggest. Use Epsom salt, Coarse Salt or Sugar. Food colouring can be used.  
Warning: do not use Borax!!

# Section 31 - Animals (Junior)

Contact Information: Committee - SookeFallFairEmail@gmail.com

## Animal Section Rules:

See *Animal Section Rules* at the beginning of section 11.

### Section 31 - Division A - Poultry - Standards Division

#### Classes:

- 1 Standard Cock
- 2 Standard Cockerel
- 3 Standard Hen
- 4 Standard Pullet

### Section 31 - Division B - Poultry - Bantams Division

#### Classes:

- 1 Bantam Cock
- 2 Bantam Cockerel
- 3 Bantam Hen
- 4 Bantam Pullet

### Section 31 - Division C - Poultry – Backyard Variety - Standards

#### Classes:

- 1 Rooster or Cockerel, any Variety
- 2 Hen or Pullet, any Variety

### Section 31 - Division D - Poultry – Backyard Variety - Bantams Division

#### Classes:

- 1 Rooster or Cockerel, any Variety
- 2 Hen or Pullet, any Variety
- 3 Best Crowing Rooster, Standards or Bantam

*Note: All roosters entered are eligible for the Best Crower class. Rosette will be awarded. Adult and Junior will be judged together.*

### Section 31 - Division E - Waterfowl – Standard Duck

#### Classes:

- 1 Drake
- 2 Hen

### Section 31 - Division F - Waterfowl – Bantam Duck

#### Classes:

- 1 Drake
- 2 Hen

### Section 31 - Division G - Poultry – AOV

#### Classes:

- 1 Drake
- 2 Hen
- 3 Turkey

### Section 31 - Division H - Rabbits – Pure & Mixed

#### Breeds

#### Classes:

- 1 Doe
- 2 Buck
- 3 Doe and Litter
- 4 Fur, Buck or Doe

### Section 31 - Division J - Cavy – Boar (male)

#### Classes:

- 1 Junior Boar, 12-22 oz, up to 4 Months
- 2 Intermediate Boar, 22-32 oz, up to 6 Months
- 3 Senior Boar, over 32 oz, over 6 Months

### Section 31 - Division K - Cavy – Sow (female)

#### Classes:

- 1 Junior Sow, 12-22 oz, up to 4 Months
- 2 Intermediate Sow, 22-32 oz, up to 6 Months
- 3 Senior Sow, over 32 oz, over 6 Months

### Section 31 - Division L - Other Farm Animals

#### Classes:

- 1 Milking Cow
- 2 Pony or Miniature Horse
- 3 Sheep
- 4 AOV, any Other Farm Animal

### Section 31 - Division M – Goats

#### Classes:

- 1 Standard Size Female Goat (Doe)
- 2 Miniature Goat (Doe)

# Section 35 – Teen Youth: Ages 15 to 18

Contact Information: Kathy B. mkathryn@shaw.ca

## **Section Rules:**

1. Refer to Notice to Exhibitors for General Rules.
2. Flower arranging: Flowers are judged against perfection and not against other entries. If an entry requires more than one item, look for uniformity of size, colour and shape.
3. All photographs to be regular 4"x6" prints mounted on white, grey or black backing with a 1.5 inch or 3.8 cm surrounding border. No framing or matting.
4. To prepare Youth for exhibiting in the Adult Section, all entries will be judged for quality as in the Adult Section.

*If there is only one entry in a given class, that item will be judged for quality, not automatically given 1st prize.*

### **More Youth Entries Available in:**

Kitchencraft – Section 03, Division J  
Growing Things – Section 22, Division D  
Canning - Section 23, Division D  
Animals – Section 11  
Pet Parade – Section 40

Note: Teen Youth may enter in any adult section (excluding section 09 Beer & Wine).

## **Section 35 - Division A - Arts & Crafts**

### **Classes:**

- |  |   |
|--|---|
| 1 Woodwork Art                               |   |
| 2 Woodwork, other                            |   |
| 3 Metalwork Art                              |   |
| 4 Metalwork, other                           |   |
| 5 Jewelry, any item                          |   |
| 6 Pottery                                    |   |
| 8 Clay Sculpture, other                      |   |
| 9 Portrait, any medium                       |   |
| 10 Oil Panting                               |   |
| 11 Acrylic Painting                          |   |
| 12 Watercolor                                |   |
| 13 Pastel Art                                |   |
| 14 Charcoal Drawing                          |   |
| 15 Sharpie Art                               |   |
| 16 Wire Sculpture                            |   |
| 17 Junk Sculpture (using Recycled Materials) |   |
| 18 Sculpture, any other medium               |   |
| 19 Theme Sculpture                           |   |
| 20 Print Making, any medium                  |   |
| 21 Black and White Drawing, Pencil           |   |
| 22 Drawing, Colour (Not Paint)               |   |
|  | 23 Ink Art  |
|  | 24 Graffiti Art   |
|  | 25 Painted Rock   |
|  | 26 Handmade Card, any medium  |
|  | 27 Salvage Art/ Recycled Art  |
|  | 28 Model from a kit   |
|  | 29 Handmade Soap and/or body care   |
|  | 30 Collage Maximum size 16" by 16", 40 x 40cm   |
|  | 31 Carving, any medium  |
|  | 32 Birdhouse or Mason Bee House. Wooden or any other material   |
|  | 33 Handmade Paper, made from recycling paper, 1 sheet 8" x 11" or 20cm x 28cm. See sidebar on section 29 for hints on this. |
|  | 34 Beading, any variety or size   |
|  | 35 Mobile or Wind Chime, new or recycled material   |
|  | 36 Yarn Needlepoint on plastic canvas. Maximum size 12x12" 30x30cm.   |
|  | 37 Any Other Creation   |

## ***Section 35 Teen Youth, continued***

### **Section 35 - Division B - Indigenous Theme**

#### **Classes:**

- 1 Indigenous carving, any medium
- 2 Indigenous design painting
- 3 Indigenous drawing, ink, pencil or pastel
- 4 Beading
- 5 Any other Indigenous project

### **Section 35 - Division C – Writing**

#### **Classes:**

- 1 Original Poem
- 2 Historic Essay
- 3 Theme Essay
- 4 Essay, Future Planning - Ideas to make the future a better place
- 5 Original Song
- 6 Cursive Writing or Calligraphy (e.g. poem, song or letter)
- 7 Letter to the Future You
- 8 Essay, “If I were a...”
- 9 Essay, any other topic
- 10 Original Joke
- 11 Original Tongue Twister
- 12 Any other writing

### **Section 35 - Division D – Flowers**

#### **Classes:**

- 1 Single Bloom, any variety, no other buds on stem
- 2 Flower Arrangement
- 3 This year’s Theme - a design using Sooke grown material
- 4 “The Place to BEE”, a design using Bee Friendly material

### **Section 35 - Division E - Fibre Arts**

#### **Classes:**

- 1 Knitted Clothing
- 2 Crocheted Clothing
- 3 Knitting, other
- 4 Crochet, other
- 5 Quilt, any size
- 6 Sewn article of clothing
- 7 Sewn article, other
- 8 Any other textile item
- 9 Clothing, made from recycling clean used clothes
- 10 Any item from recycled fibres or fabric (includes remake of something new from something old)

### **Section 35 - Division P – Photography**

#### **Classes:**

- 1 Fun
- 2 People
- 3 Flowers
- 4 Seasonal Fun
- 5 Animals
- 6 Landscape or Scenery
- 7 Funniest
- 8 Group Photo
- 9 “That’s Sooke”
- 10 Water Fun
- 11 Black and White Photo
- 12 Action Photo
- 13 Nature
- 14 Bloopers
- 15 Mushroom, Fungus or Lichen
- 16 Digital Photography: Digital Manipulation (see Section 06 Division D)
- 17 Theme Photo
- 18 Grandparent(s)/Elder(s)/Mentor(s)/Role Model(s)
- 19 Old Buildings
- 20 Old Things
- 21 Black and White Family Photo
- 22 “Selfie” (self portrait)
- 23 Indigenous Theme
- 24 “BEE Friendly” - Bees at work
- 25 Portraits
- 26 Birds
- 27 Insects or Arachnids
- 28 Clouds
- 29 Food

# Pet Parade

***Sponsored by Bosley's Sooke by Pet Valu  
and Collar and Comb***



Location: Eustace Road by the Community Hall.  
Registration: is at 11:30 am.  
Judging: begins at 12:00 noon - Sunday, September 10  
Followed immediately by the Pet Parade around the Community Hall



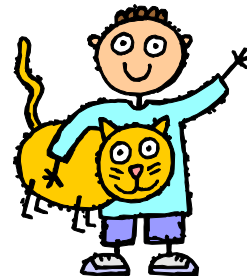
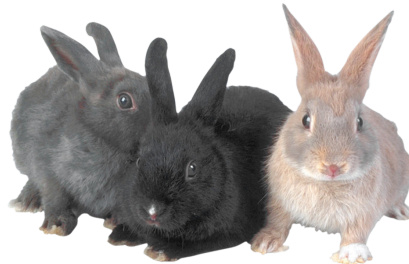
## **Pet Parade Rules:**

1. No entry fee.
2. Pet Parade will be held on Sunday of the Fair (check the Sooke News Mirror for details).
3. Pets may be borrowed for this event.
4. For everyone's safety, pets must always be controlled .

## **Section 40 - Division A – Junior to Age 18**

### **Classes:**

- 1 Largest Pet
- 2 Smallest Pet
- 3 Largest Rabbit
- 4 Largest Cat
- 5 Best Vehicle with Pet
- 6 Pet with Longest Ears
- 7 Most Colourful Pet
- 8 Youngest Competitor (who did the decorating themselves)
- 9 Oldest Pet
- 10 Fanciest Fish
- 11 Pet with Longest Tail



# Sookeini Race

## THE 13th ANNUAL GREAT 'SOOKEINI' RACE

*Any non powered car with a zucchini attached may enter*

*Senior Racers, those being 18 years and older*

*Junior Racers, those being 17 years of age and under*

**Pre-race test trials 2–3 pm on actual track.**

**Race time 3 pm Saturday**

Each major category will be divided into age heats and car size, allowing all drivers several opportunities to race. We advise that cars should be no higher than 11½ inches and no wider, outside wheel to outside wheel of no more than 9<sup>3</sup>/<sub>8</sub> inches, to prevent cars from bogging down in the race chute. Some cars available by donation, first come gets first choice.

We will have several awards given after the last race.

**\$1.00 Entry Fee**

**Use Section 51 on the entry form:**

**51-A-1 Junior (ages 17 and under)**

**51-B-1 Senior (18 and above)**

**Last minute entries welcome**

**Email the Fair ([SookeFallFairEmail@gmail.com](mailto:SookeFallFairEmail@gmail.com))**

**Or see our Website - [sookefallfair.ca](http://sookefallfair.ca)**

**For more details**





Some of the 2022 winners!